

Hydraulics

S  
C  
h  
y  
d  
r  
a  
u  
n  
i  
c  
s

**Char-Lynn®**  
Disc Valve Hydraulic Motors

11-01-878  
EN-0201



**4000 Series  
Hydraulic Motors**

We Manufacture

**Solutions**

# Catalog of Disc Valve Hydraulic Motors from One of the World's Leading Manufacturers of Off Highway Mobile Components — Eaton Hydraulics

In the late 1950's the original low speed, high torque hydraulic motor was developed from a pump gerotor element consisting of an internal gear ring and a mating gear or star. While attaching the internal gear ring to the housing as a non moving part, oil was ported to pressurize and turn the internal star in an orbit around a center point. This slow turning star coupled with a splined drive to the output shaft became the Char-Lynn® Orbit® motor. A few years after this original Char-Lynn Orbit motor was introduced another original motor concept went into production. This motor had rolls incorporated into the internal gear ring, this element was identified by the name Geroler® and is a registered trade name of Eaton Hydraulics. From these early years the Geroler motor has seen many design changes

to make these Geroler motors the best the industry has to offer. Examine the simplicity of these Geroler disc valve motors shown below. Also examine all the following pages for high value Char-Lynn disc valve motors from Eaton Hydraulics.

## Geroler® Displacement Mechanism

Motors with the Geroler element provide high starting and running torque. The Geroler element minimizes friction and thereby increases efficiency while providing smooth output shaft rotation even at very low speeds. Motor shaft rotation can be instantly reversed by changing direction of input/output flow while generating equal torque in either

direction. The displacements available provide a wide variety of speeds and torques from any Series motor.

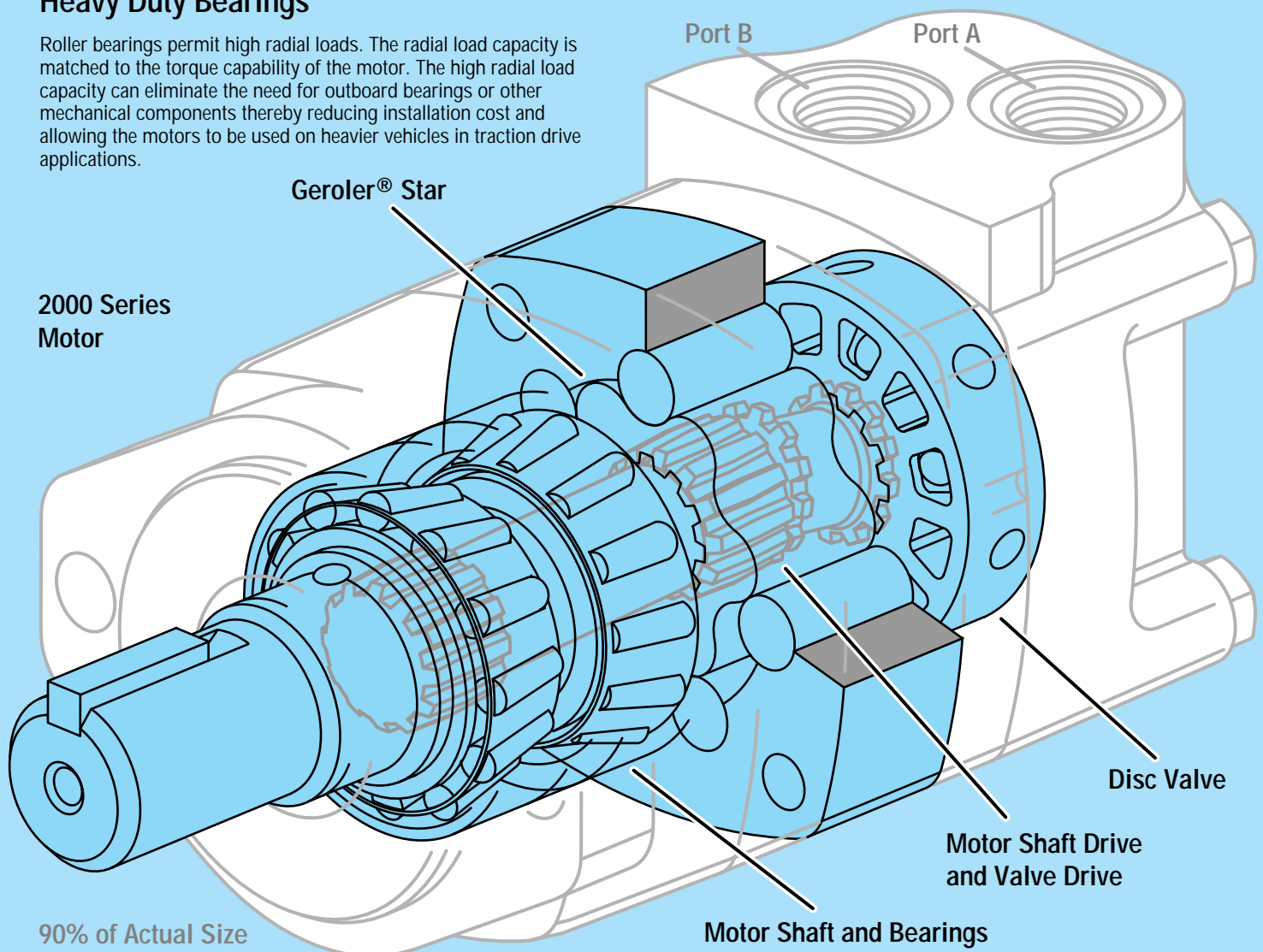
## Disc Valve

The function of the disc valve is to distribute fluid to the Geroler pockets. The pressure balanced sealing surface on the valve face maintains minimal leakage. Char-Lynn disc valve motors can be used in the same system with a radial piston pump and also in closed loop systems. The patented wear compensated disc valve provides top performance.

## Heavy Duty Bearings

Roller bearings permit high radial loads. The radial load capacity is matched to the torque capability of the motor. The high radial load capacity can eliminate the need for outboard bearings or other mechanical components thereby reducing installation cost and allowing the motors to be used on heavier vehicles in traction drive applications.

## 2000 Series Motor



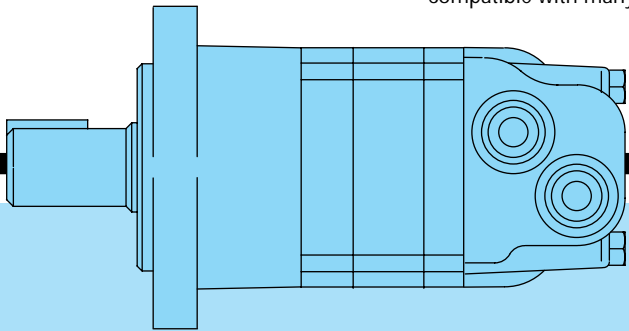
## Design Features

Char-Lynn Hydraulic motors provide design flexibility. All disc valve motors are available with various configurations consisting of:

- Displacement (Geroler size)
- Output Shaft
- No Shaft and Bearing Assembly (Bearingless Motor)
- Port Configuration
- Mounting Flange
- Other Special Features

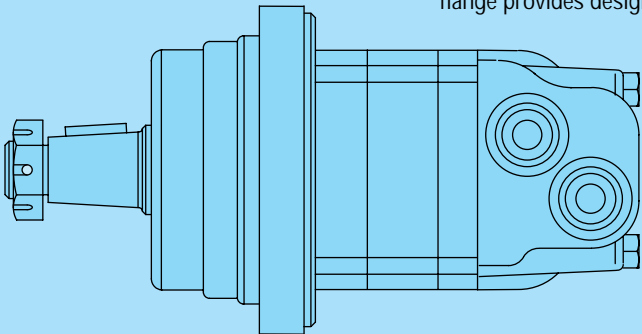
### Standard Motor

The standard motor mounting flange is located as close to the output shaft as possible. This type of mounting supports the motor close to the shaft load. This mounting flange is also compatible with many standard gear boxes.



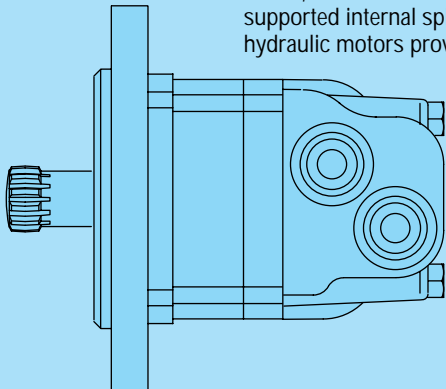
### Wheel Motor

The wheel motor mounting flange is located near the center of the motor which permits part or all of the motor to be located inside the wheel or roller hub. In traction drive applications, loads can be positioned over the motor bearings for best bearing life. This wheel motor mounting flange provides design flexibility in many applications.

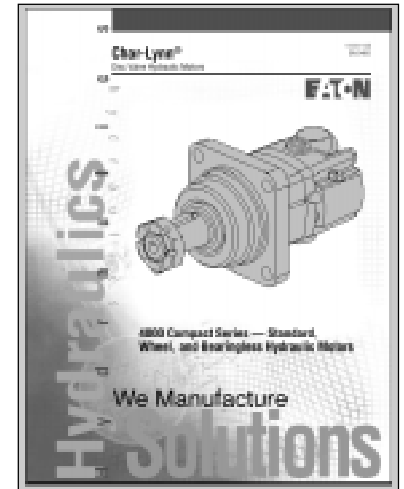


### Bearingless Motor

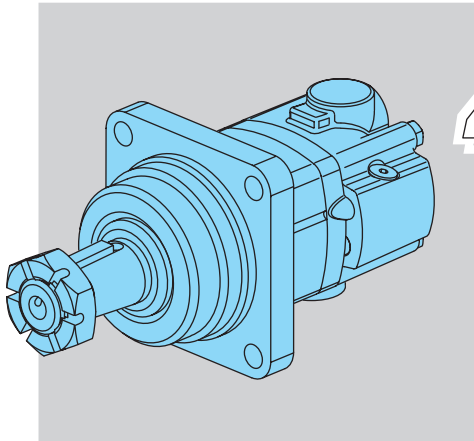
This bearingless motor has the same drive components as the standard and wheel motors (with the exception that the motor is assembled without the output shaft, bearings and bearing housing). The bearingless motor is especially suited for applications such as gear boxes, winch drives, reel and roll drives. Bearingless motor applications must be designed with a bearing supported internal spline to mate with the bearingless motor drive. Product designs using these hydraulic motors provide considerable cost savings.



# 4000 Compact Series



See Catalog 11-01-113 for a Char-Lynn 4000 Compact Series hydraulic motor, this motor has the same package size as the 2000 Series with 4000 Series performance.



# 4000 Compact Series

## 4000 Compact Series

Geroler® Element.....	6 Displacements
Flow LPM [GPM] .....	75 [20] Continuous**
	115 [30] Intermittent*
Speed .....	Up to 707 RPM
Pressure Bar [PSI] ...	200 [3000] Cont.
	300 [4500] Inter.
Torque Nm [lb-in] ....	932 [ 8250] Cont.
	1166 [10320] Inter.

4000 Compact Series Displacement Size = cubic centimeter per shaft revolution (cm<sup>3</sup>/r)  
= cubic inch per shaft revolution ([ in<sup>3</sup>/r ])

- 160 [ 9.8]
- 200 [12.3]
- 250 [15.4]
- 325 [19.8]
- 395 [24.0]
- 490 [29.8]

### Mounting Flange

- 4 Bolt (Bearingless) 101,6 [4.00] Pilot Dia. and 13,59 [.535] Dia. Mounting Holes on 127,0 [5.00] Dia. B.C.
- 2 Bolt (SAE A) (Standard) 82,5 [3.25] Pilot Dia. and 13,59 [.535] Mounting Holes on 106,4 [4.19] Dia. B.C.
- 4 Bolt (Wheel) 107,9 [4.25] Pilot Dia. and 13,59 [.535] Dia. Mounting Holes on 147,6 [5.81] Dia. B.C.
- 4 Bolt (Standard) 82,5 [3.25] Pilot Dia. and 13,59 [.535] Dia. Mounting Holes on 106,4 [4.19] Dia. B.C.
- 4 Bolt Magneto 82,5 [3.25] Pilot Dia. and 13,59 [.535] Dia. Mounting Holes on 106,4 [4.19] Dia. B.C.
- 2 Bolt (SAE B) 101,6 [4.00] Pilot Dia. and 14,27 [.562] Dia. Mounting Holes on 146,0 [5.75] Dia. B.C.

### Output Shaft

- Bearingless
- 1-1/4 inch Dia. Straight with Straight Key, 3/8-16 Threaded Hole and 47,3 [1.86] Max. Coupling Length
- 1-1/2 inch Dia. Straight with Straight Key, 3/8-16 Threaded Hole and 67,8 [2.67] Max. Coupling Length
- 32 mm Dia. Straight with Straight Key, M 8 x 1,25 -6H Threaded Hole and 56,4 [2.22] Max. Coupling Length
- 40 mm Dia. Straight with Straight Key, M12 x 1,75 -6H Threaded Hole and 79,6 [3.13] Max. Coupling Length
- 1-1/4 inch Dia. Splined 14 T, 3/8-16 Threaded Hole and 38,1 [1.50] Min. Full Spline Length and 53,1 [2.09] Max. Coupling Length
- 1-1/2 inch Dia. Splined 17 T, 31,2 [1.23] Min. Full Spline Length and 51,8 [2.04] Max. Coupling Length
- 1-1/4 inch Dia. Tapered with Straight Key and Nut
- 1-5/8 inch Dia. Tapered with Straight Key and Nut

### Port Type

- 7/8-14 O-ring (Staggered) with 7/16-20 O-ring Case Drain
- G 1/2 (BSP) (Staggered) with G 1/4 (BSP) Case Drain
- Manifold Mount with 3/8-16 UNC Mounting Threads (3)
- Manifold Mount with M10 x 1,5 -6H Mounting Threads (3)
- 1-1/16-12 O-ring (Positioned 180° Apart)
- 7/8-14 O-ring (End Ports) with 7/16-20 O-ring Case Drain (Rear)

### Case Flow

- 7/16-20 UNF 2-B O-ring Port
- G 1/4 (BSP) Straight Thread Port
- Hot Oil Shuttle with 7/16-20 UNF 2-B O-ring Port
- Hot Oil Shuttle with G 1/4 (BSP) Straight Thread Port

### Back-Pressure Relief Valve

- Set at 4,5 bar [65 PSI]

### Special Features

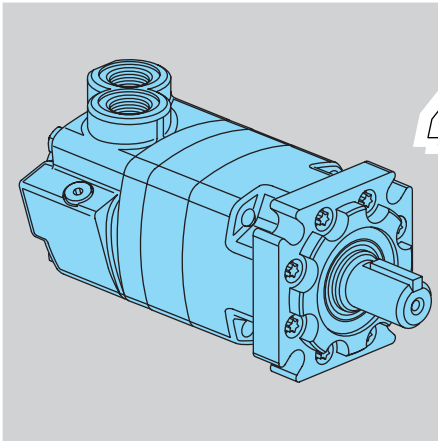
- Viton® Seal
- Speed Sensor
- Corrosion Protected
- Seal Guard Package

Viton® is a Registered Trade Name of Dupont Corp.

\*\* Continuous— (Cont.) Continuous rating, motor may be run continuously at these ratings.

\* Intermittent— (Inter.) Intermittent operation, 10% of every minute.

# 4000 Series



# 4000

## 4000 Series

Geroler® Element .....	10 Displacements
Flow LPM [GPM] .....	95 [25] Continuous**
	150 [40] Intermittent*
Speed .....	Up to 868 RPM
Pressure Bar [PSI] ...	200 [ 3000] Cont.
	300 [ 4500] Inter.
Torque Nm [lb-in] ....	970 [ 8600] Cont.
	1180 [10450] Inter.

4000 Series Displacement Size = cubic centimeter per shaft revolution ( cm<sup>3</sup>/r )  
= cubic inch per shaft revolution ( [ in<sup>3</sup>/r ] )

- 110 [ 6.7]
- 130 [ 7.9]
- 160 [ 9.9]
- 205 [12.5]
- 245 [15.0]
- 280 [17.1]\*\*\*
- 310 [19.0]
- 395 [24.0]
- 495 [30.0]
- 625 [38.0]

### Mounting Flange

- 4 Bolt (Bearingless) 127,0 [5.00] Pilot Dia. and 14,27 [ .562] Dia. Mounting Holes 161,9 [6.38] Dia. B.C.
- 4 Bolt (SAE B) (Standard) 101,6 [4.00] Pilot Dia. and 14,7 [ .58] Mounting Slots on 127,0 [5.00] Dia. B.C.
- 4 Bolt (Wheel) 139,7 [5.50] Pilot Dia. and 14,3 [ .56] Dia. Mounting Holes on 165,1 [6.50] Dia. B.C.
- 4 Bolt (SAE C) (Standard) 127,0 [5.00] Pilot Dia. and 14,3 [ .56] Dia. Mounting Holes on 161,9 [6.38] Dia. B.C.

### Output Shaft

- Bearingless
- 1-1/4 inch Dia. Straight with Straight Key, 3/8-16 Threaded Hole and 53,1 [2.09] Max. Coupling Length
- 1-5/8 inch Dia. Tapered with Straight Key and 1-1/4—18 UNEF Slotted Hex. Nut
- 1-1/4 inch Dia. Splined 14 T with 38,1 [1.50] Min. Full Spline Length and 53,1 [2.09] Max. Coupling Length
- 1-1/2 inch Dia. Splined 17 T with 31,2 [1.23] Min. Full Spline Length
- 40 mm Dia. Straight with Straight Key, M12 x 1,75-6H Threaded Hole

### Port Type

- 1-1/16—12 O-ring with 7/16-20 O-ring Case Drain and Check Valve
- G 3/4 (BSP) O-ring with G 1/4 (BSP) O-ring Case Drain and Check Valve
- 3/4 inch 4 Bolt Split Flange with 7/16-20 O-ring Case Drain and Check Valve
- 7/8-14 O-ring with 9/16-18 O-ring Case Drain with Shuttle Valve

### Special Features

- Viton Shaft Seal
- Viton Seals
- Hot Oil Shuttle
- Corrosion Protected

\*\*\* For performance and dimension data contact your Eaton Hydraulics representative.

\*\* Continuous— (Cont.) Continuous rating, motor may be run continuously at these ratings.

\* Intermittent— (Inter.) Intermittent operation, 10% of every minute.

## Design Flexibility

Char-Lynn motors are truly built for high torque low speed. A lot of power is derived from this small package. This power advantage provides the designer with a product that can be used for overall compactness in addition to taking full advantage of the high pressure ratings typical of present day hydraulic components.

Char-Lynn Disc Valve hydraulic motors allow the designer to put the power where it is needed. Indeed, these motors are small in size, big in output power. Hence, the small package can eliminate a lot of installation problems. Furthermore, the motors can be mounted directly on the driven device away from the original power source which eliminates other mechanical linkages such as chains, sprockets, belts, pulleys, gears, rotating drive shafts, and universal joints. Several motors can be driven from the same power source and can be connected in series or parallel to each other.

## Durability

The design and method of manufacture of three critical drive train components, valve drive, shaft drive, and output shaft, give these motors durability. Consequently, these durable disc valve motors stand up against high hydraulic pressures. Other built in features, such as the rugged **Tapered** roller bearings provide a good match to this tough design.

## Performance Rating

Our method of rating these motors recognizes that at slower speeds and flow, higher pressures and torque are permitted. Hence, our performance data shows the complete flow range (down to 1 liter per minute or 1/4 gallon per minute) and speed range (down to one revolution per minute depending on application).

## Controllable Speeds

Char-Lynn motors operate at low speeds that remain very near constant even when load varies. Shaft speed is varied smoothly, easily and economically using simple inexpensive controls. Also, these motors are reversible. Consequently, direction of shaft rotation can be changed instantly with equal output torque in either direction.

## Dependable Performance

Highly precise manufacturing of parts and the disc valve's unique wear compensating design provide consistent, dependable performance and long life even under varying conditions.

## Reliability

Char-Lynn motors are self contained, with hydraulic fluid providing lubrication. These motors are completely sealed so they can operate safely and reliably in hostile environments such as dust, dirt, steam, water, and heat and provide reliable performance.

## High Efficiencies

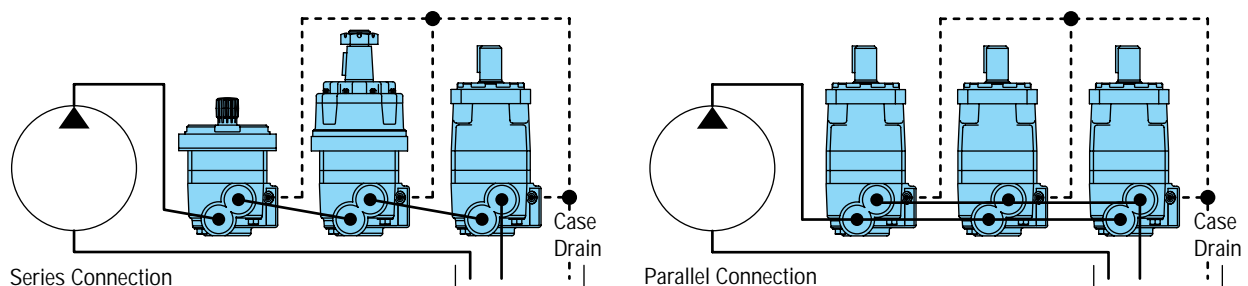
Char-Lynn disc valve motors have high efficiencies providing high output for the pressure and flow supplied. The high mechanical efficiency enables you to obtain a given torque with a smaller displacement motor.

Volumetric efficiency is high and speed is relatively constant with little variation due to changes in load. Speed is controlled easily and smoothly.

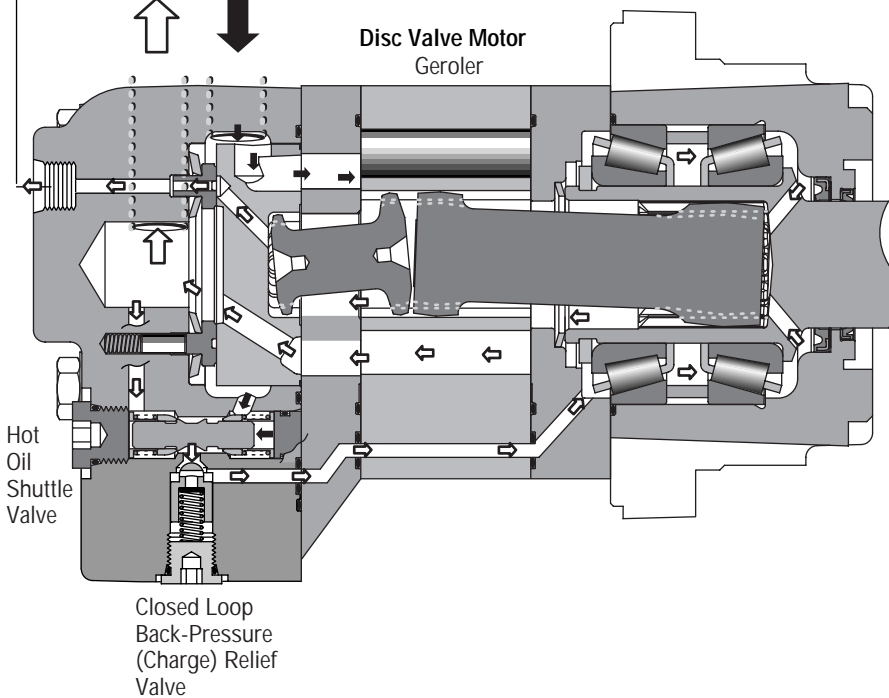
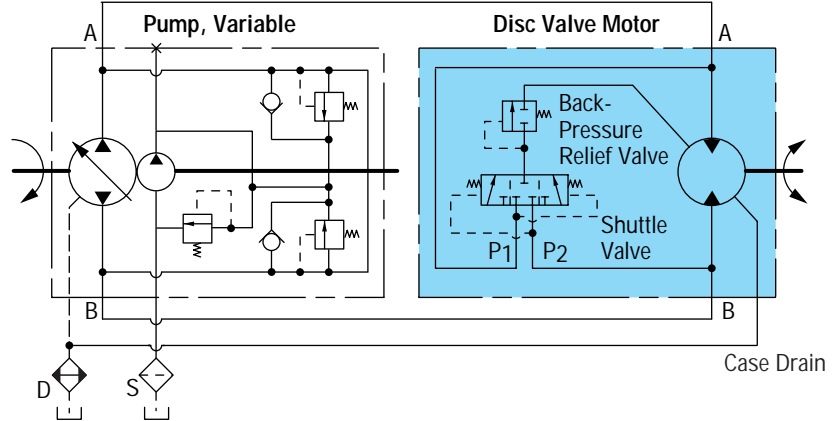
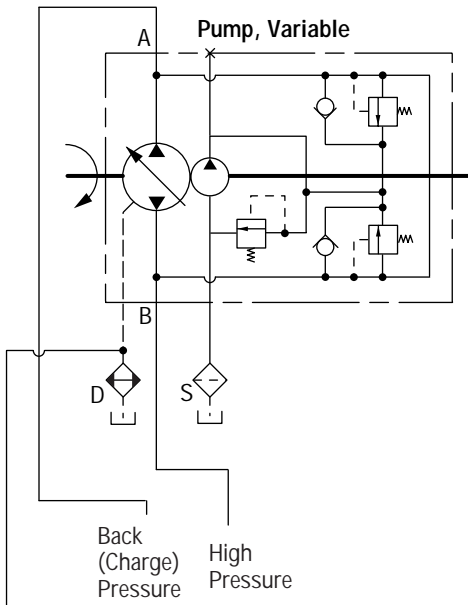
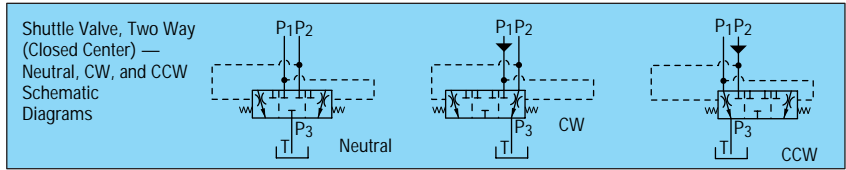
In conclusion, these efficiencies mean less heat buildup in the hydraulic system.

## Case Drain and Shuttle Valve Options

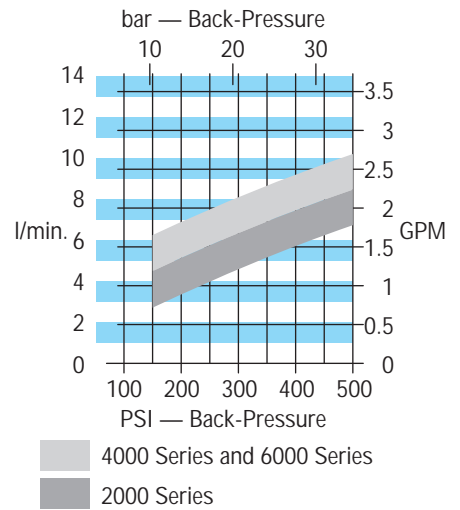
Many hydraulic systems can benefit from the use of a system case drain. Char-Lynn disc valve motors provide this feature built in. One of the advantages for case drain flow is that contamination is flushed from the system. This flushing also aids in cooling the system and lowering the case pressure which will extend motor seal life. With a case drain line in place, oil pressure in the gear box (Bearingless motor applications) can also be controlled. In applications where more system cooling and flushing is required, a shuttle valve option is available in 2000, 4000, and 6000 Series motors.



# Typical (Closed Loop) Hydraulic Circuit Shuttle Flow 2000, 4000, 6000 Series



**Typical Disc Valve Motor Shuttle Flow with 4,5 bar [65 PSI] Back-Pressure Relief Valve (Typical Data)**  
Due to Machining Tolerances, Flow May be More or Less



Disc Valve Motor with shuttle valve **must have a case drain to tank**, without this drain line the internal drive splines will not have adequate lubrication.

Low Speed High Torque Hydraulic Motors with Shuttle and Charge Pressure Relief Valve — Patent No. U.S. 4,645,438.

## Speed Sensor 2000, 4000 and 6000 Series

Eaton has developed a speed sensor specifically designed for LSHT motors. The design is rugged and fully protected against accidental reverse polarity or short circuit hook up. A built in pull up resistor simplifies installation with control systems.

This sensor is fully compatible with mobile vehicle electrical systems and gives a reliable digital on/off signal over a wide speed range and temperature range. The sensor is field-serviceable; no factory setting or shimming is required.

**Supply Voltage:** 8 to 24 Vdc (compatible with 12V vehicle systems)

**Supply Current:** 20 mA max. (Vs) (including internal pull-up resistor)

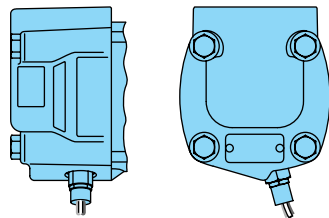
**Output Voltage:** Low < .5 Vdc @ 10 mA; output is open collector with 10kΩ pull-up resistor.

**Connection** — standard 3 prong Weatherpack connector with 18 AWG (american wire gage) cables:

- Position A (red) = power supply
- Position B (white) = signal output
- Position C (black) = common

### 2000 Series

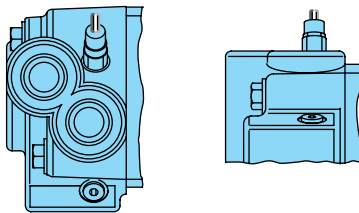
**Output Speed Sensor** — digital on/off signal from a Hall Effect switch; 30 pulses/revolution



**Output Quadrature Speed Sensor** — 60 pulses/revolution

### 4000 Series

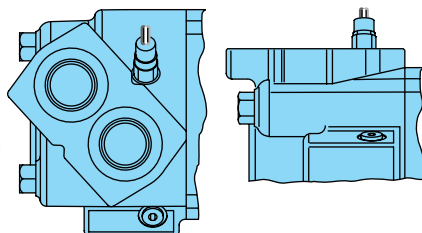
**Output Speed Sensor** — digital on/off signal from a Hall Effect switch; 36 pulses/revolution



**Output Quadrature Speed Sensor** — 72 pulses/revolution

### 6000 Series

**Output Speed Sensor** — digital on/off signal from a Hall Effect switch; 40 pulses/revolution



**Output Quadrature Speed Sensor** — 80 pulses/revolution

## Quadrature Speed Sensor 2000, 4000 and 6000 Series

Eaton has developed a new **speed** and **direction** sensor, based on the field proven technology of our standard sensor, designed for off road environments. The new sensor is based on the principle of quadrature and has two output versions.

- The first version has two output signals 90° out of phase. Each output provides one pulse per target tooth.
- The second version has a speed signal that is twice the output pulses per revolution and it also has a direction signal. For example, the 2000 Series versions provide 60 symmetrical pulses per revolution with the 30-tooth target.

**Outputs** — Digital signals from NPN transistors (open collector output with internal 10K pull-up resistors).

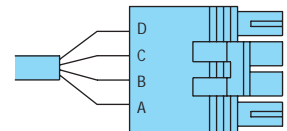
**Supply Voltage:** 8 to 24 Vdc\* (compatible with 12V vehicle conditions)

**Supply Current:** 40 mA max. (Including internal pull-up resistors)

**Output**

**Low Voltage:** 0.5 Vdc maximum @ 10 mA

The sensor has reverse polarity protection, short circuit protection, load dump protection and EMC (Electromagnetic Compatibility) protection (the customer should qualify the EMC protection in their specific application).



Weatherpack Tower Connector

**Connections** —

Standard 4 prong Weatherpack connector with 18 AWG (American Wire Gage) cables or M12 threaded connector:

#### Weatherpack (Version 1)

- Position A (red) = power supply
- Position B (black) = common
- Position C (orange) = output one
- Position D (yellow) = output two

#### M12 Connector (Version 1)

- Pin 1 = power supply
- Pin 2 = output one
- Pin 3 = common
- Pin 4 = output two

#### Weatherpack (Version 2)

- Position A (red) = power supply
- Position B (black) = common
- Position C (blue) = speed signal
- Position D (white) = direction

#### M12 Connector (Version 2)

- Pin 1 = power supply
- Pin 2 = direction
- Pin 3 = common
- Pin 4 = speed signal

**Note:** The speed sensor or quadrature speed sensor option does **NOT** include read-out display. Possible sources for read-out display include:

Eaton Corporation  
**Durant Products**  
 901 South 12th Street  
 Watertown, WI 57094  
 1-800-289-3866

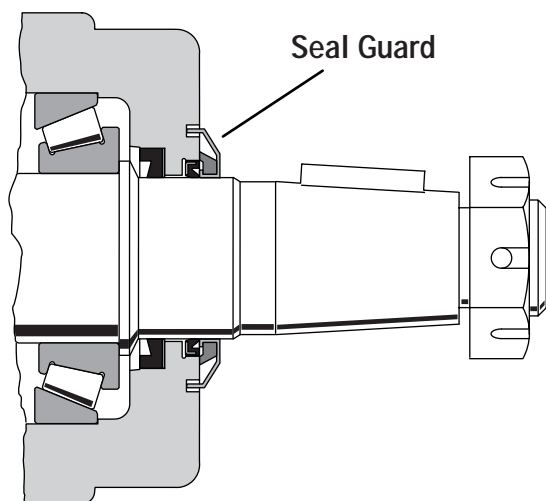


## Shaft Seal

This time proven shaft seal design has a patented feature which allows the seal lip to follow shaft deflection under high side loads and therefore provides better sealing. Additionally, these seals can withstand case pressure up to: 140 Bar [2000 PSI] 2000 Series, 100 Bar [1500 PSI] 4000 Series, 70 Bar [1000 PSI] 6000 Series, and 20 Bar [300 PSI] 10,000 Series.

To optimize seal life, reduce case pressures (with case drain) at shaft speeds greater than 250 RPM.

## Optional Seal Guard Package for 2000, 4000, and 6000 Series



In response to the need for robust seal protection requirements, Eaton now offers a seal guard package. This feature consists of a metal shield that protects an internal wiper seal. The shield is interference-fit on the output shaft and rotates with the output shaft. For added protection, the shield is recessed into a special groove in the bearing housing face.

Centrifugal force causes foreign debris to be forced away from the high pressure shaft and dust seal area. The seal guard does not seal hydraulic fluid. Instead, it protects the standard seals from damage caused by foreign debris. Typical applications benefiting from this feature include street sweepers, industrial sweepers, and harvesting machinery.

**NOTE:** This option is used in conjunction with the special front retainer with shield groove. Special feature (Hardware) option code "28" for 2000, "13" for 4000, and "14" for 6000 Series, **these motors include the seal guard package, special front retainer and a special shaft with additional length** (6000 Series with design code -006 (effective December 1, 1995) will not require a special front retainer and standard shafts will accept the seal guard).

## Internal Check Valves

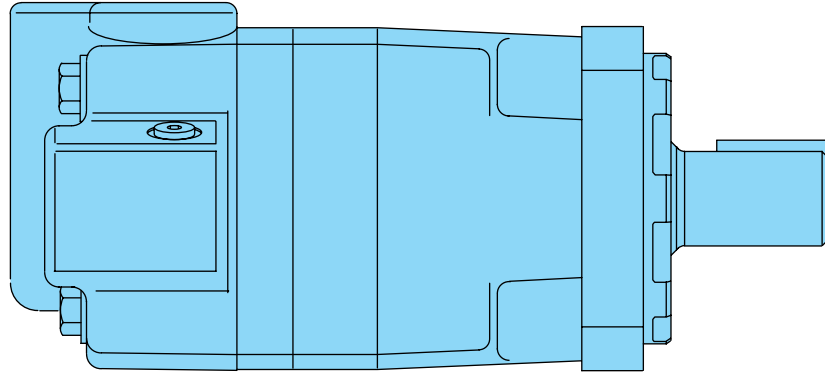
An internal check valve is provided to relieve case pressure to the low pressure side of the motor. This check valve system is adequate for most applications. In addition, motors have an external case pressure drain port for use when continuous back pressure exceeds: 140 Bar [2000 PSI] 2000 Series, 100 Bar [1500 PSI] 4000 Series, 70 Bar [1000 PSI] 6000 Series, and 20 Bar [300 PSI] 10,000 Series.

## Corrosion Protected Disc Valve Motors

2000, 4000, 6000, and 10,000 Series motors are available with a corrosion resistant coating for use in hostile environments. This coating protects the motor from salt water, and various chemicals and is especially effective in marine, food processing, cleansing, fishing, and agricultural applications. Motor output shaft plating helps eliminate seal damage caused by these caustic or acid materials. Char-Lynn disc valve motors are available with just the output shaft plated, or with plated shaft and entire motor exterior coating.

# Specifications

## 4000 Series



### Specification Data—4000 Series

		110	130	160	205	245	310	395	495	625	
		[ 6.7]	[ 7.9]	[ 9.9]	[12.5]	[15.0]	[19.0]	[24.0]	[30.0]	[38.0]	
Displ. cm <sup>3</sup> /r [in <sup>3</sup> /r]	Continuous	697	722	582	459	383	303	239	191	151	
	Intermittent	868	862	693	546	532	422	376	305	241	
Max. Speed (RPM) @ ..... Flow	Continuous	697	722	582	459	383	303	239	191	151	
	Intermittent	868	862	693	546	532	422	376	305	241	
Flow LPM [GPM]	Continuous	75 [20]	95 [25]	95 [25]	95 [25]	95 [25]	95 [25]	95 [25]	95 [25]	95 [25]	
	Intermittent	95 [25]	115 [30]	115 [30]	115 [30]	130 [35]	130 [35]	150 [40]	150 [40]	150 [40]	
Torque Nm [lb-in]	★ 1-5/8 Inch Dia. Tapered Shaft	Continuous	320 [2850]	375 [3330]	485 [4290]	600 [5300]	705 [6240]	850 [7530]	930 [ 8240]	945 [ 8375]	970 [ 8605]
		Intermittent	470 [4160]	560 [4940]	705 [6240]	800 [7100]	845 [7470]	1065 [9420]	1185 [10470]	1170 [10350]	1180 [10450]
Pressure Δ Bar [Δ PSI]	★ 1-5/8 Inch Dia. Tapered Shaft	Continuous	205 [3000]	205 [3000]	205 [3000]	205 [3000]	205 [3000]	205 [3000]	190 [2750]	140 [2000]	115 [1700]
		Intermittent	310 [4500]	310 [4500]	310 [4500]	310 [4500]	260 [3750]	260 [3750]	240 [3500]	170 [2500]	140 [2000]
		Peak	310 [4500]	310 [4500]	310 [4500]	310 [4500]	310 [4500]	310 [4500]	295 [4250]	230 [3300]	180 [2600]

Maximum Case Pressure - without Case Drain \* — 100 Bar [1500 PSI]

**A simultaneous maximum torque and maximum speed NOT recommended.** For permissible continuous and intermittent operating combinations of pressure and flow refer to performance data on pages 38 - 41.

★ **Maximum torque for 1-1/4 inch shaft** — 770 Nm [6800 lb-in] Continuous and 960 Nm [8500 lb-in] intermittent.

\* For back pressure over 105 Bar [1500 PSI] use an external case drain. Install case drain lines so that the motor case remains filled at all times.

**Maximum inlet pressure** — 310 Bar [4500 PSI]. Do not exceed Δ pressure rating (see chart above).

\* **Maximum return pressure** — 310 Bar [4500 PSI]. Do not exceed Δ pressure rating (see chart above).

**Δ Bar [Δ PSI]** — True pressure difference between inlet port and outlet port.

**Continuous Rating** — Motor may be run continuously at these ratings.

**Intermittent Operation** — 10% of every minute.

**Peak Operation** — 1% of every minute.

**Recommended Fluids** — Premium quality, anti-wear type hydraulic oil with a viscosity of not less than 70 SUS at operating temperature (see page 81).

**Recommended Maximum System Operating Temp.** — Is 82° C [180° F]

**Recommended Filtration** — per ISO Cleanliness Code, level 18/13

To assure best motor life, run motor for approximately one hour at 30% of rated pressure before application to full load. Be sure motor is filled with fluid prior to any load applications.



245 cm³/r [15.0 in³/r]  
 Δ Pressure Bar [PSI]

# Performance Data 4000 Series

		[250] 15	[500] 35	[750] 50	[1000] 70	[1250] 85	[1500] 105	[1750] 120	[2000] 140	[2250] 155	[2500] 170	[2750] 190	[3000] 205	[3250] 225	[3500] 240	[3750] 260	
[.5]																	
1.9		[460] 50 5	[980] 110 2														
[1]		[480] 55 14	[990] 110 14	[1490] 170 14	[1990] 225 13	[2480] 280 13	[2970] 335 12	[3400] 385 12	[3830] 435 11	[4250] 480 11	[4680] 530 10	[5020] 565 4					
[2]		[500] 55 30	[1000] 115 30	[1520] 170 29	[2040] 230 29	[2540] 285 28	[3050] 345 27	[3420] 385 26	[3930] 445 24	[4440] 500 23	[4900] 555 22	[5320] 600 20	[5740] 650 18	[6160] 695 16	[6640] 750 14	[7150] 810 11	
[4]		[510] 60 61	[1030] 115 61	[1560] 175 60	[2080] 235 65	[2600] 295 59	[3130] 355 59	[3630] 415 58	[4130] 465 56	[4630] 525 53	[5120] 580 49	[5570] 630 47	[6030] 680 44	[6480] 730 42	[6970] 775 39	[7340] 830 36	
[6]		[510] 60 91	[1040] 120 90	[1570] 175 90	[2100] 235 89	[2620] 295 88	[3160] 355 85	[3660] 415 86	[4200] 475 83	[4710] 530 80	[5220] 590 75	[5690] 645 72	[6150] 695 70	[6620] 750 67	[7050] 795 63	[7430] 840 59	
[8]		[500] 55 121	[1020] 115 121	[1560] 175 120	[2110] 240 119	[2630] 295 118	[3150] 355 117	[3680] 415 115	[4210] 475 113	[4740] 535 111	[5250] 595 106	[5720] 645 103	[6200] 700 99	[6670] 755 96	[7090] 800 91	[7470] 845 87	
[10]		[470] 55 152	[1000] 115 151	[1540] 175 150	[2100] 235 148	[2620] 295 148	[3150] 355 145	[3690] 415 143	[4230] 480 141	[4770] 540 137	[5290] 600 133	[5760] 650 129	[6240] 705 125	[6710] 760 125	[7140] 805 120		
[12]		[450] 50 183	[980] 110 182	[1530] 175 180	[2080] 235 179	[2610] 295 178	[3140] 355 176	[3680] 415 173	[4220] 475 170	[4760] 540 166	[5280] 595 161	[5750] 650 157	[6230] 705 152	[6700] 755 152			
[14]		[420] 45 213	[960] 110 212	[1520] 170 211	[2060] 235 210	[2600] 295 209	[3130] 355 208	[3670] 415 206	[4200] 475 203	[4740] 535 200	[5260] 595 195	[5740] 650 190	[6220] 705 185				
[16]		[400] 45 244	[950] 105 243	[1500] 170 242	[2040] 230 241	[2580] 290 240	[3120] 355 239	[3660] 415 236	[4190] 475 232	[4730] 535 229	[5250] 595 225	[5730] 650 219	[6210] 700 213				
[18]		[380] 45 275	[930] 105 274	[1480] 165 273	[2020] 230 272	[2560] 290 270	[3110] 350 269	[3650] 415 266	[4180] 470 262	[4710] 530 259	[5230] 590 254	[5720] 645 248	[6200] 700 241				
[20]		[350] 40 305	[910] 105 305	[1460] 165 304	[2000] 225 303	[2550] 290 302	[3100] 350 300	[3640] 410 296	[4170] 470 292	[4700] 530 288	[5220] 590 283	[5710] 645 276					
[22]		[310] 35 337	[870] 100 336	[1420] 160 335	[1970] 225 334	[2500] 280 332	[3050] 345 330	[3590] 405 326	[4140] 465 323	[4680] 530 319	[5200] 590 313	[5680] 640 306					
[25]		[260] 30 383	[820] 95 382	[1380] 155 381	[1930] 220 380	[2460] 280 378	[2980] 335 376	[3540] 400 372	[4090] 460 369	[4640] 525 365	[5180] 585 357						
[30]			[680] 75 457	[1250] 140 456	[1860] 210 455	[2390] 270 453	[2900] 330 450	[3430] 390 445	[3960] 445 442	[4460] 505 437	[4950] 560 427						
[35]			[1110] 125 532	[1740] 195 531	[2270] 255 528	[2790] 315 525	[3340] 375 519	[3910] 440 515	[4400] 495 509								
132																	

Motors run with high efficiency in all areas designated with a number for torque and speed, however for best motor life select a motor to run with a torque and speed range shown in the light blue area.

310 cm³/r [19.0 in³/r]  
 Δ Pressure Bar [PSI]

{ [1110]  
125  
532 } Torque [lb-in]  
Nm  
Speed RPM

Continuous  
Intermittent

		[250] 15	[500] 35	[750] 50	[1000] 70	[1250] 85	[1500] 105	[1750] 120	[2000] 140	[2250] 155	[2500] 170	[2750] 190	[3000] 205	[3250] 225	[3500] 240	[3750] 260		
[.5]			[600] 70 4	[1150] 130 2														
1.9			[620] 70 11	[1270] 145 11	[1920] 215 11	[2560] 290 10	[3170] 360 10	[3780] 425 10	[4290] 485 9	[4900] 555 9	[5490] 620 9	[6080] 685 8	[6670] 755 8	[7270] 820 7	[7880] 890 7	[8490] 960 6	[9080] 1025 5	
[2]			[630] 70 23	[1280] 145 23	[1940] 220 22	[2590] 295 22	[3230] 365 21	[3830] 435 21	[4450] 505 20	[5070] 575 20	[5680] 645 19	[6300] 710 18	[6910] 780 18	[7530] 850 17	[8160] 920 17	[8790] 995 16	[9420] 1065 15	
[4]			[640] 70 47	[1290] 145 47	[1960] 220 46	[2640] 300 46	[3290] 370 45	[3940] 445 45	[4600] 520 44	[5240] 590 44	[5880] 665 43	[6510] 735 42	[7150] 800 42	[7790] 880 41	[8450] 955 41	[9100] 1030 40		
[6]			[650] 75 71	[1300] 145 71	[1970] 225 70	[2660] 300 70	[3320] 375 69	[4000] 450 69	[4680] 530 68	[5330] 600 67	[5980] 675 66	[6630] 750 64	[7280] 825 64	[7940] 895 63				
[8]			[640] 70 96	[1300] 145 96	[1980] 225 95	[2670] 300 95	[3350] 380 94	[4030] 455 94	[4710] 530 93	[5360] 605 92	[6020] 680 91	[6670] 755 89	[7320] 825 88					
[10]			[620] 70 121	[1280] 145 120	[1970] 225 120	[2660] 300 119	[3340] 375 119	[4070] 460 118	[4740] 535 117	[5390] 610 116	[6050] 685 115	[6710] 760 112	[7370] 835 109					
[12]			[600] 70 145	[1260] 140 144	[1940] 220 144	[2630] 295 143	[3340] 375 142	[4040] 455 142	[4730] 535 141	[5390] 610 140	[6060] 685 139	[6720] 760 135						
[14]			[570] 65 169	[1240] 140 169	[1920] 215 168	[2600] 295 168	[3310] 375 167	[4000] 450 167	[4710] 530 165	[5380] 610 164	[6060] 685 163	[6730] 760 159						
[16]			[540] 60 193	[1230] 140 193	[1900] 215 192	[2580] 290 192	[3280] 370 190	[3970] 450 189	[4700] 530 188	[5380] 610 187	[6050] 685 185							
[18]			[490] 55 217	[1210] 135 217	[1880] 210 216	[2550] 290 216	[3240] 365 214	[3930] 445 213	[4680] 530 211	[5370] 605 209	[6040] 680 207							
[20]			[450] 50 242	[1190] 135 242	[1860] 210 242	[2520] 285 241	[3210] 365 240	[3900] 440 238	[4670] 530 236	[5360] 605 234	[6030] 680 232							
[22]			[420] 45 267	[1130] 130 266	[1820] 205 266	[2520] 285 265	[3180] 360 264	[3870] 440 262	[4640] 525 260	[5320] 600 258								
[25]			[340] 40 303	[1050] 120 302	[1780] 200 302	[2510] 285 301	[3160] 355 300	[3820] 430 299	[4590] 520 296	[5280] 595 293								
[30]			[1010] 115 363	[1700] 190 362	[2420] 275 360	[3100] 350 359	[3720] 420 358	[4500] 510 354	[5140] 580 351									
[35]				[1580] 180 422	[2360] 265 420	[2950] 335 419	[3540] 400 418	[4390] 495 413										
132																		

Performance data is typical at 120 SUS. Actual data may vary slightly from unit to unit in production

395 cm<sup>3</sup>/r [24.0 in<sup>3</sup>/r]  
 Δ Pressure Bar [PSI]

# Performance Data 4000 Series

	[250] 15	[500] 35	[750] 50	[1000] 70	[1250] 85	[1500] 105	[1750] 120	[2000] 140	[2250] 155	[2500] 170	[2750] 190	[3000] 205	[3250] 225	[3500] 240
[.5] <b>1.9</b>	[700] 80 4	[1340] 150 2												
[1] <b>3.8</b>	[750] 85 9	[1430] 160 9	[2110] 240 8	[2770] 315 8	[3460] 390 8	[4170] 470 7	[4890] 550 7	[5610] 635 7	[6310] 715 5	[7010] 790 4	[7700] 870 2			
[2] <b>7.5</b>	[800] 90 18	[1500] 170 18	[2290] 260 17	[3030] 340 16	[3850] 435 16	[4620] 520 15	[5310] 600 15	[6000] 680 14	[6750] 765 13	[7490] 845 13	[8240] 930 12	[8990] 1015 11	[9730] 1100 10	[10470] 1185 8
[4] <b>15</b>	[860] 95 38	[1630] 185 38	[2470] 280 37	[3310] 375 36	[4120] 465 36	[4900] 555 35	[5640] 635 35	[6390] 720 34	[7190] 810 34	[7890] 890 33	[8780] 990 32			
[6] <b>23</b>	[860] 95 57	[1690] 190 57	[2540] 285 55	[3410] 385 55	[4180] 470 54	[4980] 565 53	[5780] 655 52	[6580] 745 50	[7400] 835 49	[8220] 930 47				
[8] <b>30</b>	[840] 95 76	[1680] 190 76	[2550] 290 75	[3400] 385 74	[4260] 480 73	[5090] 575 72	[5870] 665 70	[6650] 750 68	[7480] 845 66					
[10] <b>38</b>	[800] 90 95	[1680] 190 95	[2550] 290 94	[3400] 385 93	[4260] 480 92	[5100] 575 91	[5920] 670 89	[6730] 760 86	[7560] 855 84					
[12] <b>45</b>	[760] 85 114	[1660] 190 114	[2520] 285 113	[3380] 380 112	[4270] 480 111	[5110] 575 110	[5900] 665 108	[6690] 755 105						
[14] <b>53</b>	[740] 85 133	[1640] 185 133	[2490] 280 132	[3370] 380 131	[4260] 480 130	[5100] 575 129	[5880] 665 127	[6650] 750 124						
[16] <b>61</b>	[710] 80 153	[1620] 185 153	[2460] 280 152	[3350] 380 151	[4240] 480 149	[5080] 575 147	[5840] 660 145							
[18] <b>68</b>	[680] 75 172	[1600] 180 172	[2430] 275 171	[3340] 375 170	[4220] 475 168	[5060] 570 166	[5810] 655 164							
[20] <b>76</b>	[610] 70 192	[1580] 180 191	[2400] 270 190	[3320] 375 189	[4210] 475 187	[5040] 570 185	[5780] 655 183							
[22] <b>83</b>	[570] 65 211	[1490] 170 210	[2340] 265 209	[3220] 365 208	[4160] 470 206	[5010] 565 204	[5740] 650 201							
[25] <b>95</b>	[490] 55 239	[1350] 155 238	[2250] 255 237	[3080] 350 236	[4070] 460 235	[4960] 560 233	[5700] 645 230							
[30] <b>114</b>		[1080] 120 285	[1650] 185 284	[2270] 255 282	[3020] 340 281	[3850] 435 279								
[35] <b>132</b>			[1520] 170 331	[2120] 240 330	[2870] 325 328	[3760] 425 325								
[40] <b>151</b>				[2050] 230 376	[2790] 315 374	[3620] 410 371								

Motors run with high efficiency in all areas designated with a number for torque and speed, however for best motor life select a motor to run with a torque and speed range shown in the light blue area.

[2050]  
230  
376 } Torque [lb-in]  
          } Nm  
          } Speed RPM

Continuous  
Intermittent

495 cm<sup>3</sup>/r [30.0 in<sup>3</sup>/r]  
 Δ Pressure Bar [PSI]

	[250] 15	[500] 35	[750] 50	[1000] 70	[1250] 85	[1500] 105	[1750] 120	[2000] 140	[2250] 155	[2500] 170
[.5] <b>1.9</b>	[800] 90 3	[1750] 200 1								
[1] <b>3.8</b>	[880] 100 7	[1875] 210 6	[2875] 325 6	[3825] 430 5	[4775] 540 4	[5720] 645 3	[6670] 755 2	[7600] 860 1		
[2] <b>7.5</b>	[905] 100 18	[1940] 220 17	[2975] 335 17	[3990] 450 16	[5010] 565 15	[6010] 680 12	[7010] 790 11	[8000] 905 10	[8980] 1015 8	
[4] <b>15</b>	[935] 105 30	[2005] 225 29	[3075] 345 28	[4160] 470 27	[5245] 595 26	[6300] 710 23	[7355] 830 21	[8375] 945 19	[9400] 1060 17	[10350] 1170 14
[6] <b>23</b>	[920] 105 45	[2010] 225 44	[3100] 350 43	[4185] 475 42	[5265] 595 40	[6345] 715 37	[7420] 840 35	[8445] 955 32	[9465] 1070 30	
[8] <b>30</b>	[905] 100 61	[2015] 230 60	[3125] 355 59	[4205] 475 57	[5295] 600 55	[6385] 720 52	[7485] 845 49	[8510] 960 46		
[10] <b>38</b>	[880] 100 76	[1995] 225 75	[3095] 350 74	[4205] 475 72	[5295] 600 70	[6390] 720 66	[7480] 845 63	[8525] 960 59		
[12] <b>45</b>	[860] 95 91	[1975] 225 90	[3095] 350 89	[4200] 475 87	[5305] 600 85	[6390] 720 81	[7475] 845 77			
[14] <b>53</b>	[830] 95 106	[1945] 220 105	[3055] 345 104	[4165] 470 102	[5275] 595 100	[6360] 720 96	[7445] 840 92			
[16] <b>61</b>	[805] 90 122	[1910] 215 120	[3020] 340 119	[4130] 465 117	[5245] 595 115	[6330] 715 111	[7420] 840 107			
[18] <b>68</b>	[740] 85 137	[1860] 210 136	[2980] 335 134	[4105] 465 132	[5235] 590 130	[6305] 715 125	[7380] 835 121			
[20] <b>76</b>	[680] 75 153	[1810] 205 152	[2940] 330 150	[4085] 460 147	[5225] 590 145	[6285] 710 140				
[25] <b>95</b>	[570] 65 191	[1665] 190 189	[2800] 315 187	[4005] 455 184	[5210] 590 182	[6135] 695 177				
[30] <b>114</b>		[1520] 170 228	[2645] 300 226	[3765] 425 223	[4885] 550 220	[5985] 675 215				
[35] <b>132</b>			[2400] 270 265	[3510] 395 263						
[40] <b>151</b>			[2155] 245 305	[3260] 370 303						

Performance data is typical at 120 SUS. Actual data may vary slightly from unit to unit in production

# Performance Data 4000 Series

625 cm<sup>3</sup>/r [38.0 in<sup>3</sup>/r]  
Δ Pressure Bar [PSI]

	[250] 15	[500] 35	[750] 50	[1000] 70	[1250] 85	[1500] 105	[1600] 100	[1700] 115	[1800] 125	[2000] 140
[.5] 1.9	[1000] 115 2									
[1] 3.8	[1080] 120 5	[2340] 265 5	[3600] 405 5	[4850] 550 4	[6100] 690 4	[7350] 830 3	[7820] 885 3	[8290] 935 2	[8760] 990 2	
[2] 7.5	[1085] 125 14	[2380] 270 14	[3675] 415 14	[5010] 565 13	[6350] 715 12	[7625] 860 11	[8115] 915 10	[8605] 970 9	[9095] 1030 8	[10075] 1140 7
[4] 15	[1090] 125 23	[2420] 275 23	[3750] 425 23	[5175] 585 22	[6600] 745 21	[7900] 895 19	[8410] 950 18	[9000] 1015 17	[9590] 1085 16	[10450] 1180 14
[6] 23	[1095] 125 35	[2460] 280 35	[3825] 430 35	[5220] 590 34	[6620] 750 33	[7950] 900 31	[8430] 950 30	[8910] 1005 29	[9490] 1070 28	
[8] 30	[1100] 125 48	[2500] 280 48	[3900] 440 47	[5270] 595 46	[6640] 750 45	[7990] 905 43	[8460] 955 43	[8925] 1010 42		
[10] 38	[1130] 130 60	[2550] 290 60	[3975] 450 59	[5320] 600 58	[6670] 755 57	[8045] 910 54	[8595] 970 53	[9150] 1035 52		
[12] 45	[1160] 130 72	[2600] 295 72	[4050] 460 71	[5375] 605 70	[6700] 755 69	[8100] 915 65	[8660] 980 64			
[14] 53	[1105] 125 84	[2535] 285 84	[3965] 450 83	[5325] 600 82	[6685] 755 81	[8065] 910 77	[8620] 975 76			
[16] 61	[1050] 120 96	[2465] 280 95	[3880] 440 95	[5275] 595 94	[6670] 755 93	[8035] 910 89	[8580] 970 88			
[18] 68	[990] 110 108	[2405] 270 107	[3825] 430 107	[5240] 590 105	[6655] 750 104	[7345] 830 100				
[20] 76	[930] 105 121	[2350] 265 120	[3770] 425 120	[5205] 590 118	[6640] 750 116					
[25] 95	[750] 85 151	[2175] 245 150	[3600] 405 149	[5000] 565 147	[6400] 725 146					
[30] 114	[550] 60 181	[1975] 225 180	[3400] 385 179	[4800] 530 177	[6200] 700 176					
[35] 132			[3125] 355 210	[4545] 515 208						
[40] 151			[2850] 320 241	[4295] 485 239						

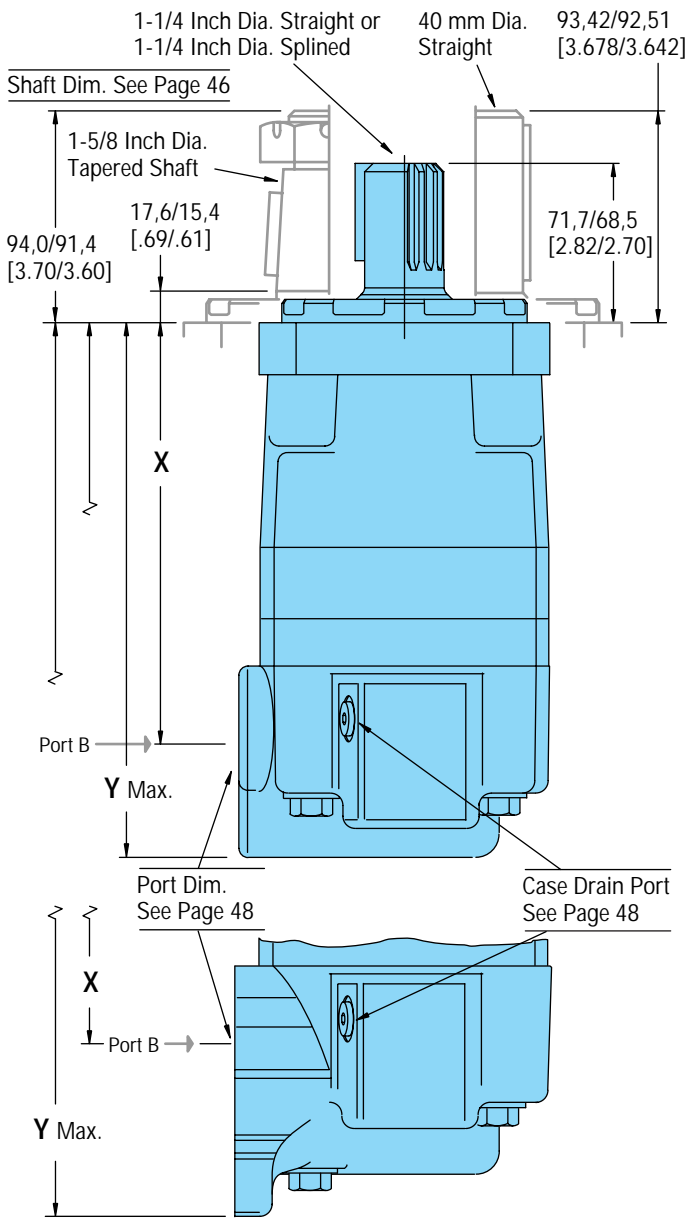
Motors run with high efficiency in all areas designated with a number for torque and speed, however for best motor life select a motor to run with a torque and speed range shown in the light blue area.

[2850]  
320  
241 } Torque [lb-in]  
Nm  
Speed RPM

Continuous  
Intermittent

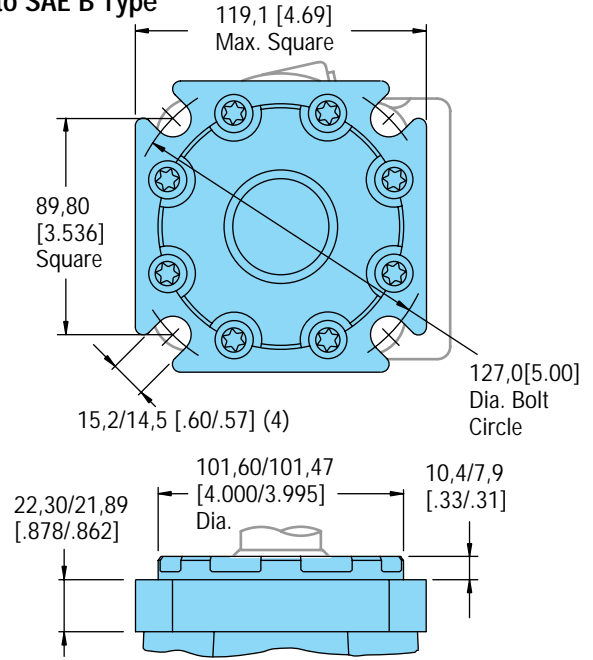
Performance data is typical at 120 SUS. Actual data may vary slightly from unit to unit in production

# Dimensions — 4000 Series Standard Motor



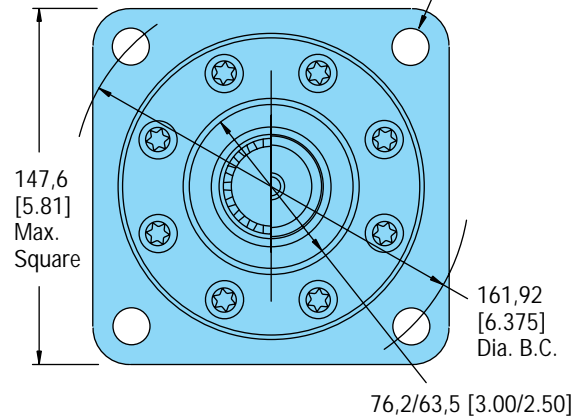
## Standard Flange— Similar to SAE B Type

**Standard Rotation**  
Viewed from Shaft End  
Port A Pressurized — CW  
Port B Pressurized — CCW



## SAE C Flange

14,53/14,15 [572/557] Dia. Thru Max.

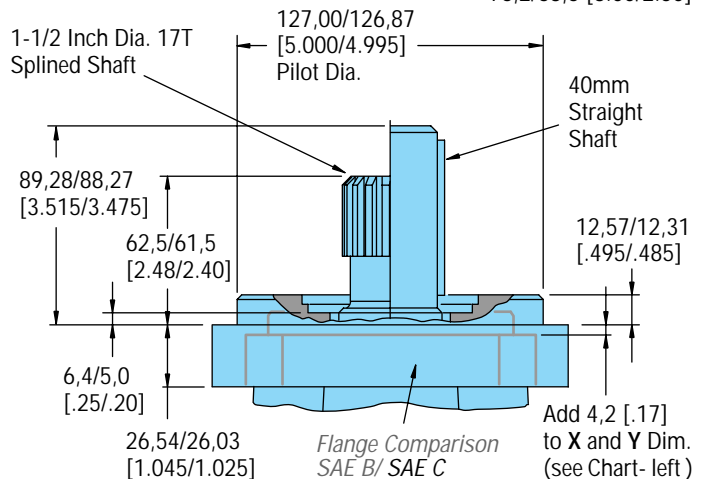


### 4000 Series Standard Motor with 1-1/16-12 O-ring Ports or G 3/4 (BSP) Ports

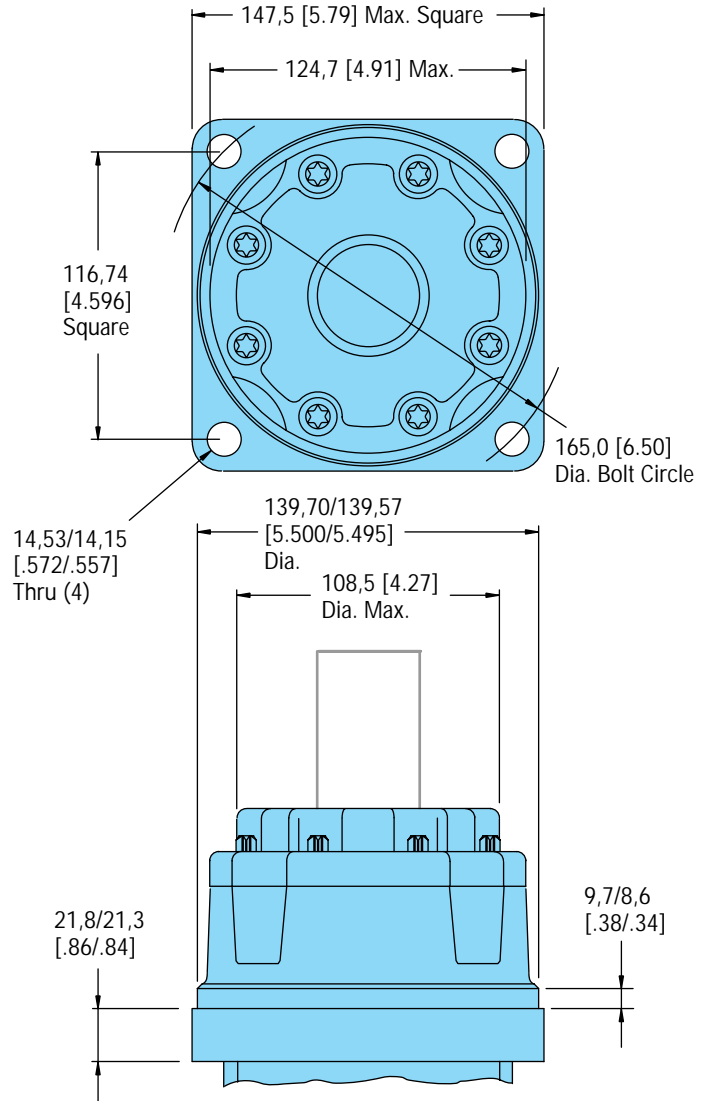
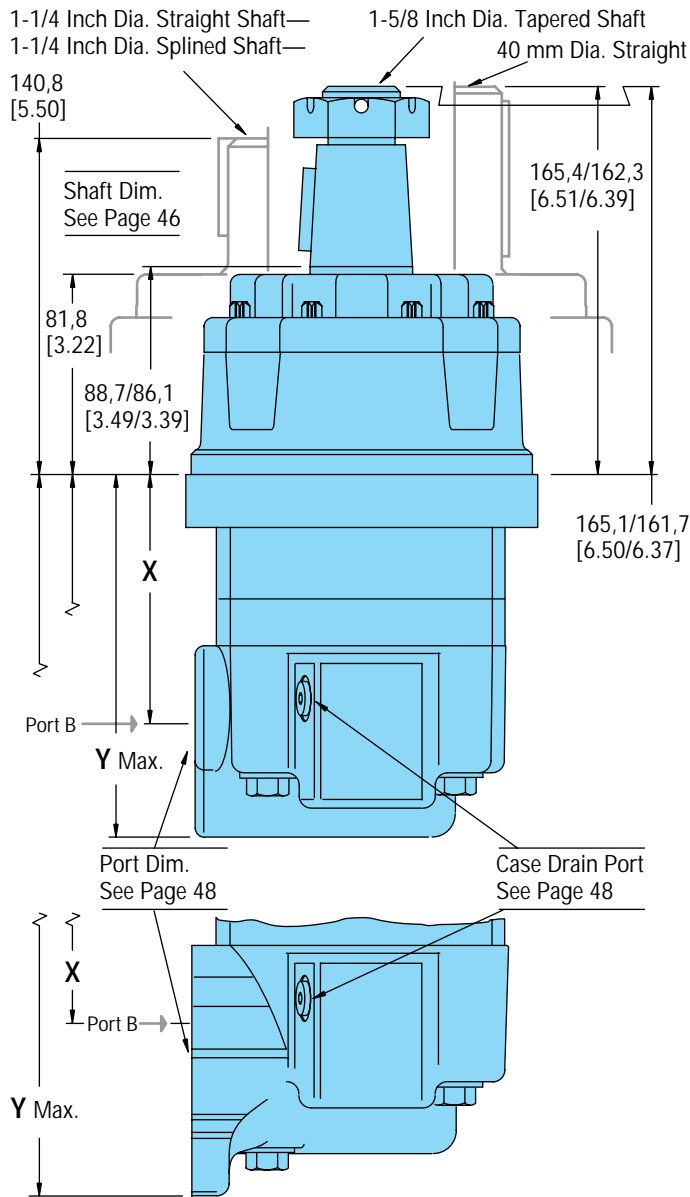
Displ. cm <sup>3</sup> /r [in <sup>3</sup> /r]	110 [6.7]	130 [7.9]	160 [9.9]	205 [12.5]	245 [15.0]	310 [19.0]	395 [24.0]	495 [30.0]	625 [38.0]
X Dim. mm [inch]	158,3 [6.23]	162,3 [6.39]	168,7 [6.64]	177,2 [6.98]	168,7 [6.64]	177,2 [6.98]	187,9 [7.40]	200,7 [7.90]	217,8 [8.58]
Y Dim. mm [inch]	214,4 [8.44]	218,4 [8.60]	224,7 [8.85]	233,2 [9.18]	224,7 [8.85]	233,2 [9.18]	243,9 [9.60]	256,8 [10.11]	273,9 [10.78]

### 4000 Series Standard Motor with 3/4 inch Split Flange Ports

X Dim. mm [inch]	166,7 [6.57]	170,8 [6.73]	177,0 [6.97]	185,6 [7.31]	177,1 [6.97]	185,6 [7.31]	196,3 [7.73]	209,2 [8.24]	226,2 [8.91]
Y Dim. mm [inch]	246,3 [9.70]	250,4 [9.86]	256,7 [10.11]	265,2 [10.44]	256,7 [10.11]	265,2 [10.44]	275,9 [10.86]	288,8 [11.37]	305,9 [12.04]



# Dimensions — 4000 Series Wheel Motor



## 4000 Series Wheel Motor with 1-1/16-12 O-ring Ports or G 3/4 (BSP) Ports

Displ. cm <sup>3</sup> /r [in <sup>3</sup> /r]	110 [ 6.7]	130 [ 7.9]	160 [ 9.9]	205 [12.5]	245 [15.0]	310 [19.0]	395 [24.0]	495 [30.0]	625 [38.0]
X Dim. mm [inch]	87,4 [3.44]	91,5 [3.60]	97,8 [3.85]	106,3 [4.19]	97,8 [3.85]	106,3 [4.19]	117,0 [4.61]	129,9 [5.12]	146,8 [5.78]
Y Dim. mm [inch]	143,3 [5.64]	147,3 [5.80]	153,6 [6.05]	162,2 [6.38]	153,6 [6.05]	162,2 [6.38]	172,8 [6.80]	185,8 [7.31]	202,8 [7.98]

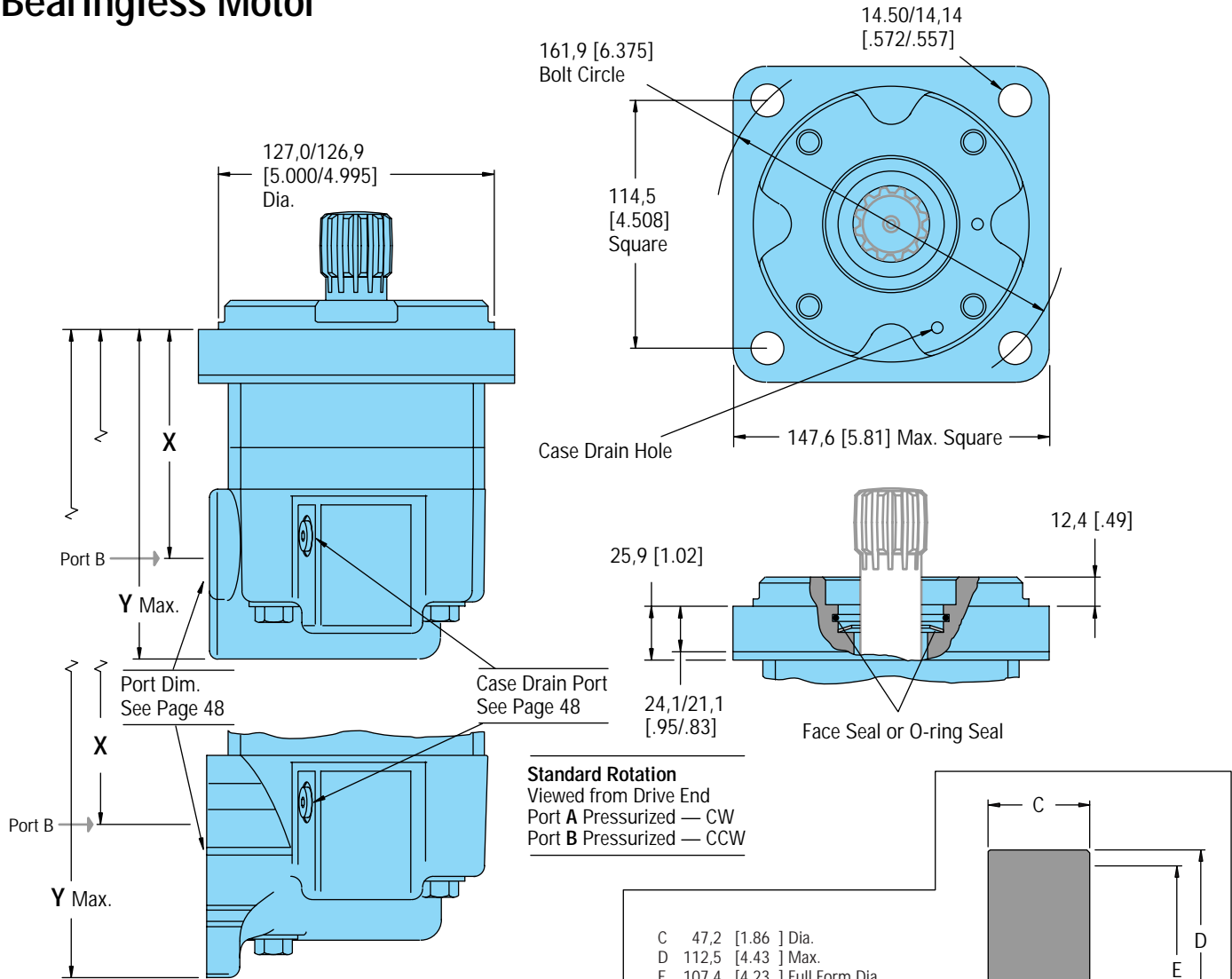
## 4000 Series Wheel Motor with 3/4 inch Split Flange Ports

X Dim. mm [inch]	95,0 [3.74]	99,1 [3.90]	105,5 [4.16]	114,0 [4.49]	105,5 [4.16]	114,0 [4.49]	124,7 [4.91]	137,6 [5.42]	154,4 [6.08]
Y Dim. mm [inch]	174,5 [6.87]	178,5 [7.03]	184,9 [7.28]	193,4 [7.61]	184,9 [7.28]	193,4 [7.61]	204,1 [8.03]	217,0 [8.54]	234,0 [9.21]

**Standard Rotation**  
Viewed from Shaft End  
Port A Pressurized — CW  
Port B Pressurized — CCW



# Dimensions — 4000 Series Bearingless Motor



## 4000 Series Bearingless Motor with 1-1/16-12 O-ring Ports or G 3/4 (BSP) Ports

Displ.	110	130	160	205	245	310	395	495	625
cm <sup>3</sup> /r	110	130	160	205	245	310	395	495	625
[in <sup>3</sup> /r]	[ 6.7 ]	[ 7.9 ]	[ 9.9 ]	[12.5]	[15.0]	[19.0]	[24.0]	[30.0]	[38.0]

X Dim.	91,0	95,0	101,4	109,9	101,4	109,9	120,6	133,5	150,5
mm	91,0	95,0	101,4	109,9	101,4	109,9	120,6	133,5	150,5
[inch]	[3.58]	[3.74]	[4.00]	[4.33]	[4.00]	[4.33]	[4.75]	[5.26]	[5.93]

Y Dim.	146,8	150,8	157,1	165,7	157,1	165,7	176,3	189,2	206,3
mm	146,8	150,8	157,1	165,7	157,1	165,7	176,3	189,2	206,3
[inch]	[5.78]	[5.94]	[6.19]	[6.52]	[6.19]	[6.52]	[6.94]	[7.45]	[8.12]

## 4000 Series Bearingless Motor with 3/4 inch Split Flange Ports

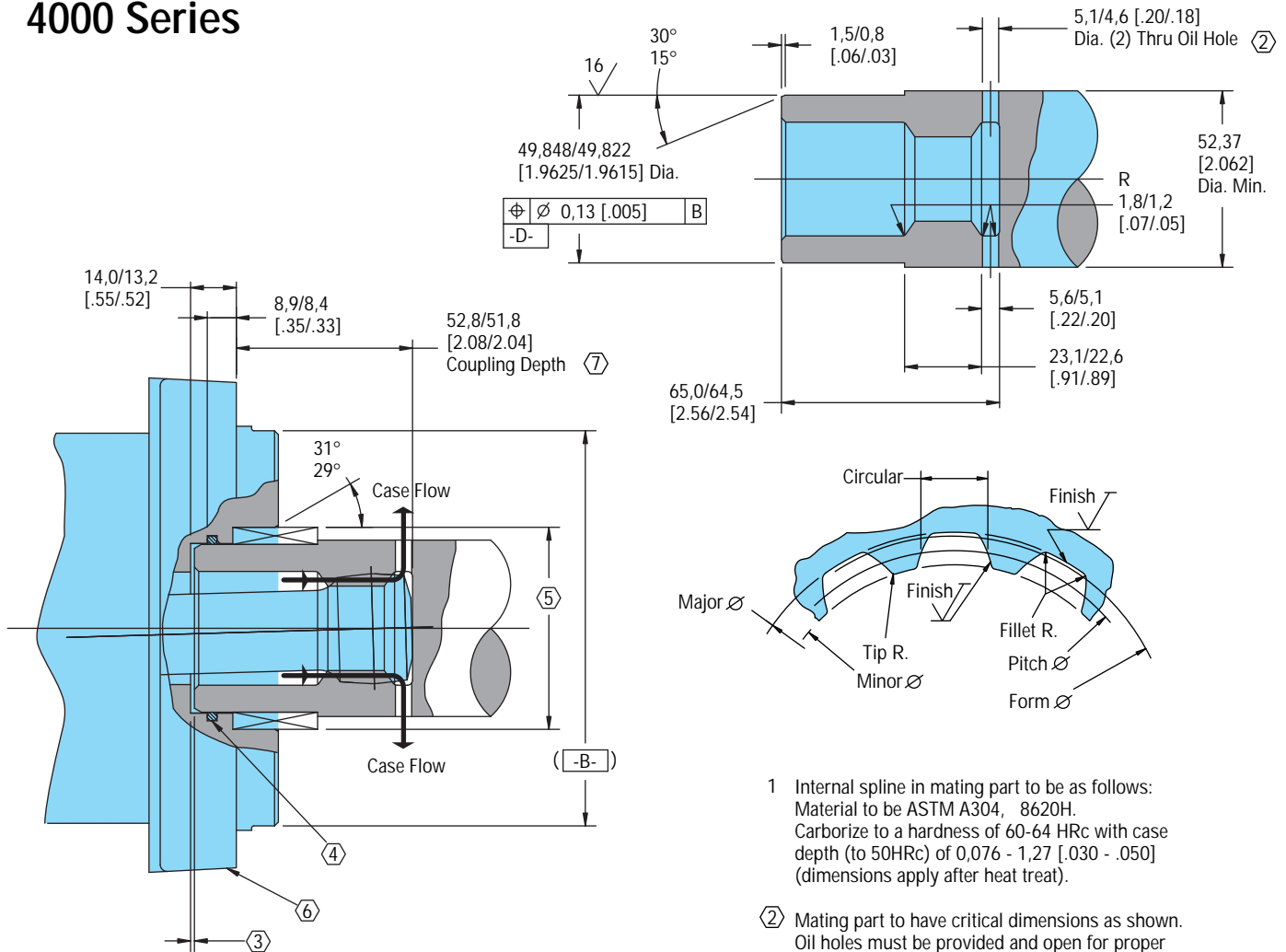
X Dim.	99,4	103,5	109,7	118,3	109,7	118,3	129,0	141,9	159,0
mm	99,4	103,5	109,7	118,3	109,7	118,3	129,0	141,9	159,0
[inch]	[3.92]	[4.08]	[4.32]	[4.66]	[4.32]	[4.66]	[5.08]	[5.59]	[6.26]

Y Dim.	178,7	182,8	189,1	197,6	189,1	197,6	208,3	221,2	238,3
mm	178,7	182,8	189,1	197,6	189,1	197,6	208,3	221,2	238,3
[inch]	[7.04]	[7.20]	[7.44]	[7.78]	[7.44]	[7.78]	[8.20]	[8.71]	[9.38]

For 4000 Series Bearingless Motor application information contact your Eaton representative (mating coupling blanks available from Eaton Hydraulics).

Note: After machining blank, part must be hardend per Eaton specification.

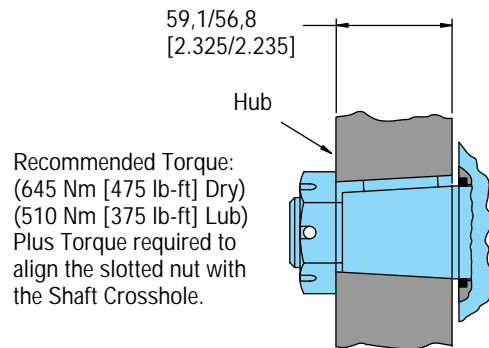
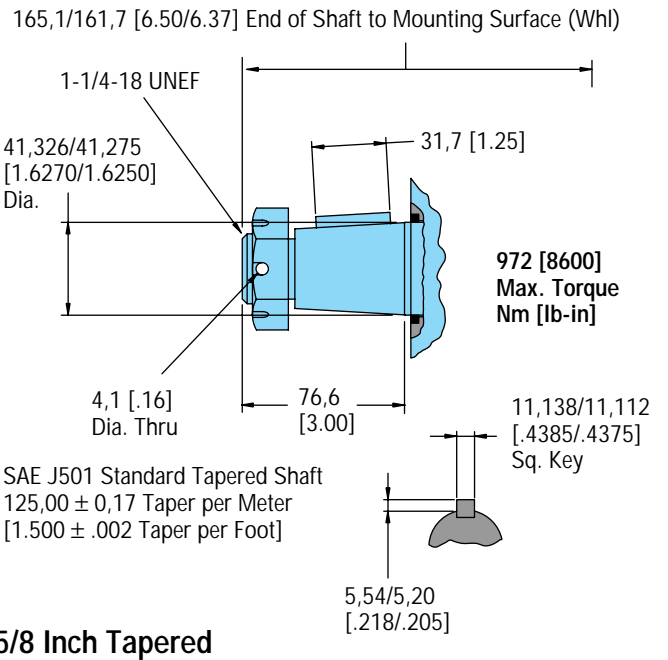
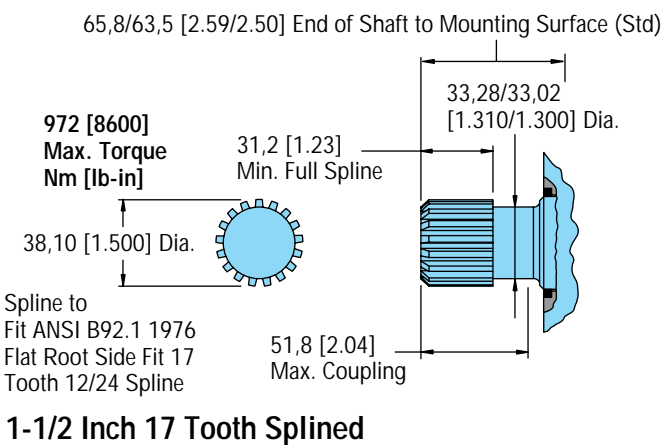
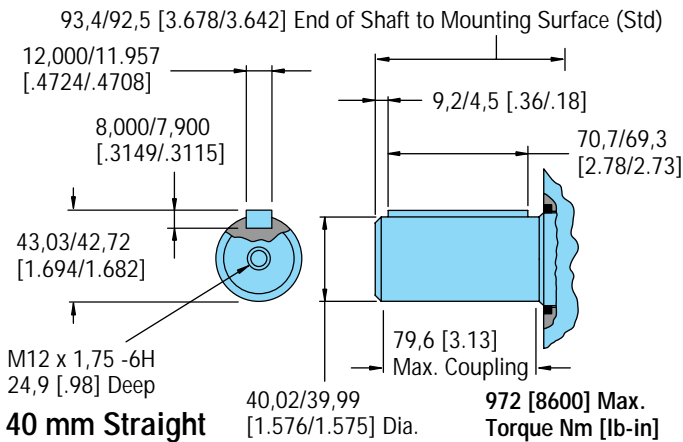
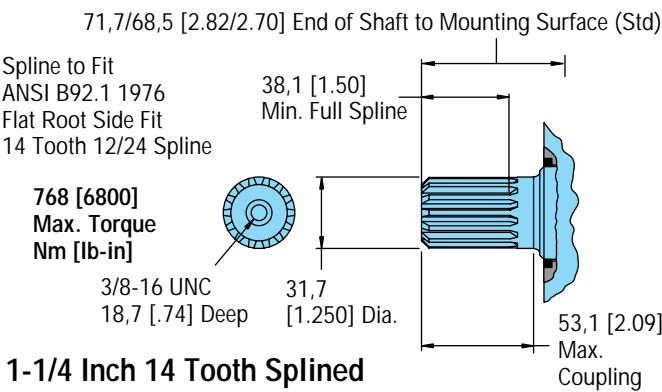
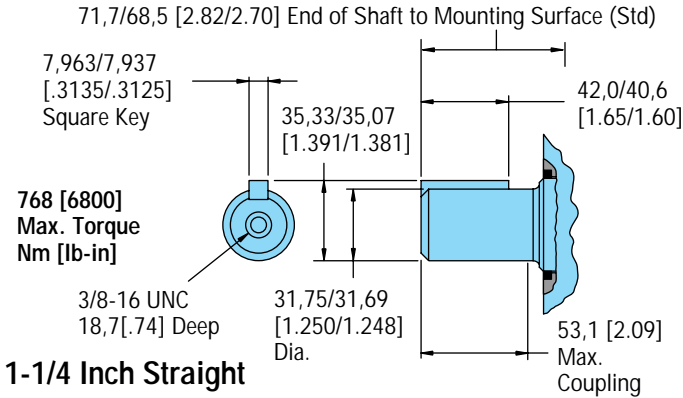
# Bearingless Installation — 4000 Series



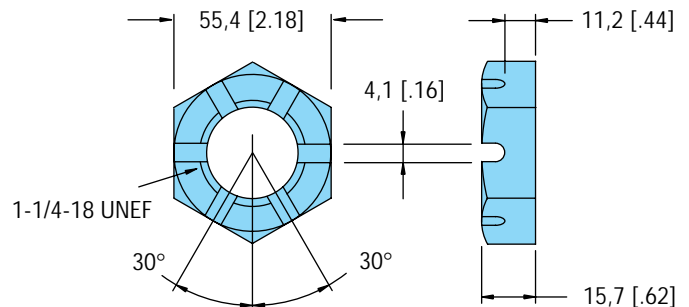
Spline Pitch — 10/20  
 Pressure Angle — 30°  
 Number of teeth — 12  
 Class of Fit — Ref. 5  
 Type of Fit — Side  
 Pitch Diameter — Ref. 30.480000 [1.200000]  $\text{◎}$  0.20 [.008] H  
 Base Diameter — Ref. 26.396455 [1.0392305]  
 Major Diameter — 33.43 [1.316] Max. 33.23 [1.308] Min.  
 Minor Diameter — 28.40 - 28.58 [1.118 - 1.125]  
 Form Diameter, Min. — 32.59 [1.283]  
 Fillet Radius — 0.63 - 0.76 [.025 - .030]  
 Tip Radius — 0.26 - 0.51 [.010 - .020]  
 Finish — 1,6 [63]  
 Involute Profile Variation — +0.000 -0.025 [+0.0000 -0.0010]  
 Total Index Variation — 0.038 [.0015]  
 Lead Variation — 0.013 [.0005]  
 Circular Space Width:  
 Maximum Actual — 5.045 [.1986]  
 Minimum Effective — 4.995 [.1951]  
 Maximum Effective — Ref. 5.009 [.1972]  
 Minimum Actual — Ref. 4.986 [.1963]  
 Dimension Between Two Pins — Ref. 22.783 - 22.929 [.8970 - .9027]  
 Pin Diameter — 5.334 [.2100] Pins to Have 3.73 [.147] Wide Flat for Root Clearance

- 1 Internal spline in mating part to be as follows:  
 Material to be ASTM A304, 8620H.  
 Carborize to a hardness of 60-64 HRc with case depth (to 50HRc) of 0.076 - 1.27 [.030 - .050] (dimensions apply after heat treat).
- 2 Mating part to have critical dimensions as shown. Oil holes must be provided and open for proper oil circulation.
- 3 Some means of maintaining clearance between shaft and mounting flange must be provided.
- 4 Seal to be furnished with motor for proper oil circulation thru splines.
- 5 Counterbore designed to adapt to a standard sleeve bearing 50,010 - 50,040 [1.9689 - 1.9700] ID by 60,050 - 60,080 [2.3642 - 2.3653] (Oilite bronze sleeve bearing).
- 6 Similar to SAE "C" Four Bolt Flange.
- 7 52,8 [2.08] Max. dimension to be maintained when assembling, shipping and installing unit to insure valve drive engagement with valve (this is required on displacement code number 24 only).

## Dimensions — Shafts 4000 Series



### Tapered Shaft Hub Data



### Slotted Hexagon Nut

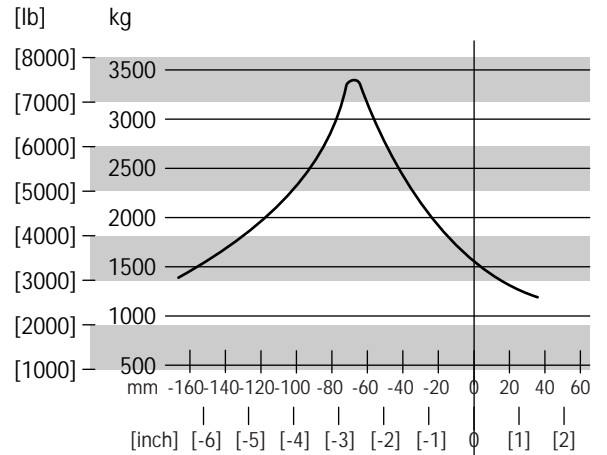
# Shaft Side Load Capacity 4000 Series

These curves indicate the radial load capacity on the motor shaft(s) at various locations.

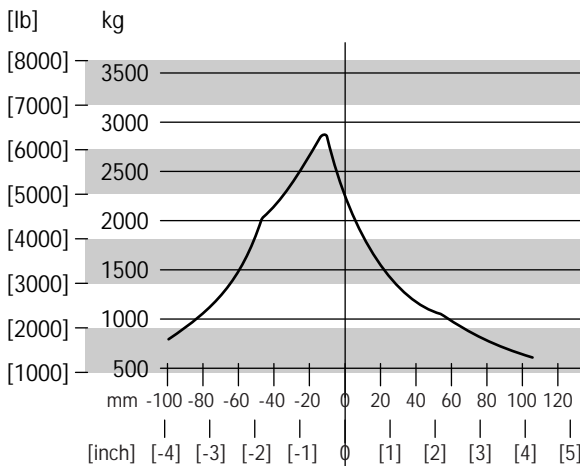
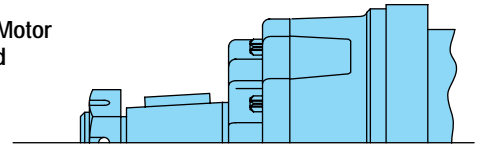
The curve is based on **B 10 Bearing life (2000 hours or 12,000,000 shaft revolutions at 100 RPM ) at rated output torque.** To determine radial load at speeds other than 100 RPM, multiply the load values given on the bearing curve by the factors in the chart below.

RPM	Multiplication Factor
50	1.23
100	1.00
200	.81
300	.72
400	.66
500	.62
600	.58
700	.56
800	.54

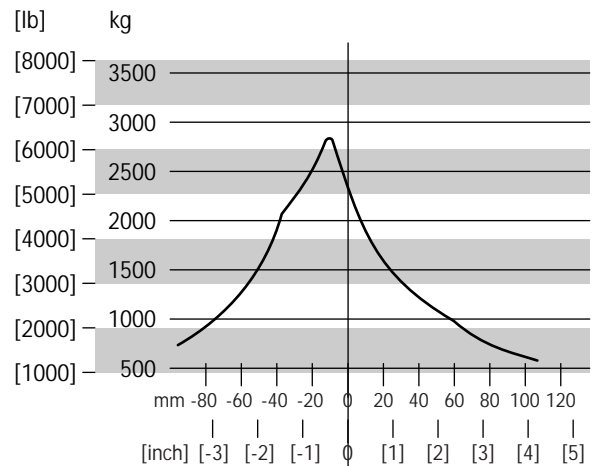
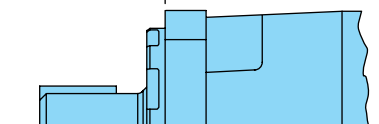
For 3,000,000 Shaft revolutions or 500 hours — Increase these shaft loads 52%.



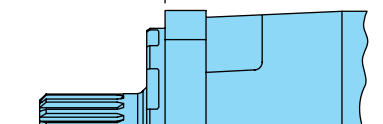
Wheel Motor  
Tapered  
Shaft



Standard Motor  
Straight  
Shaft

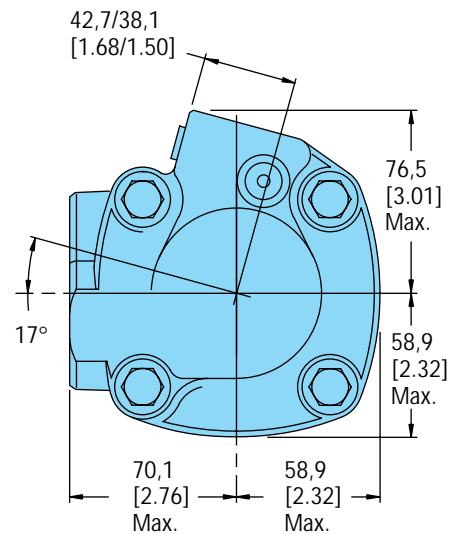
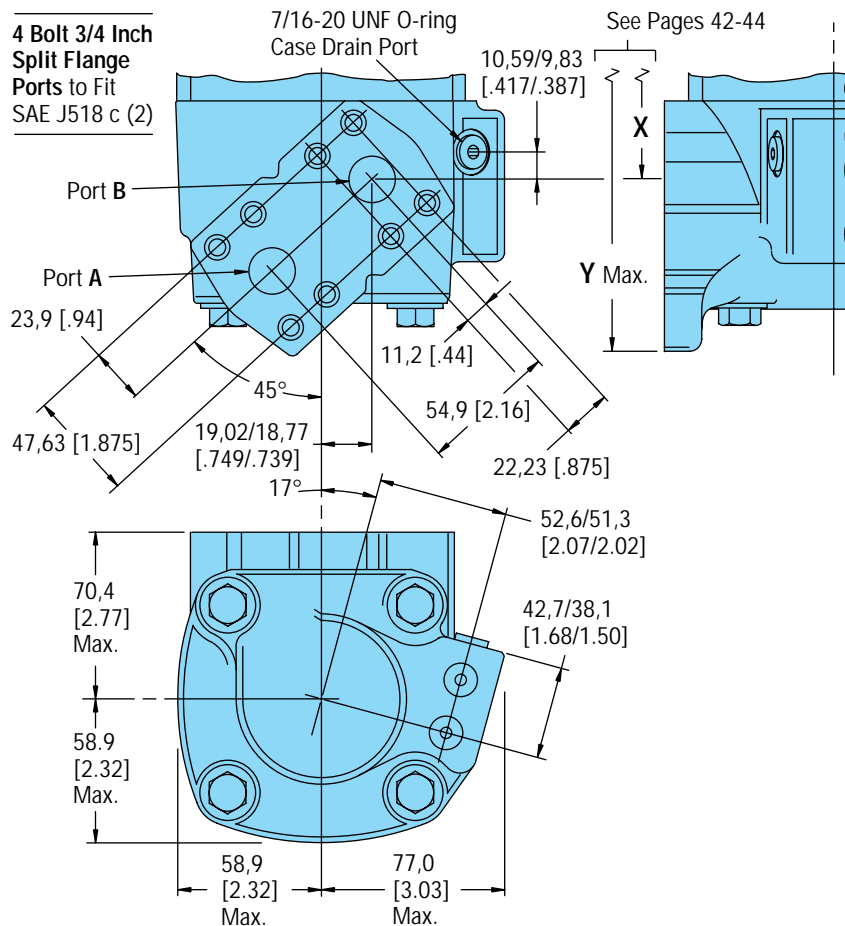
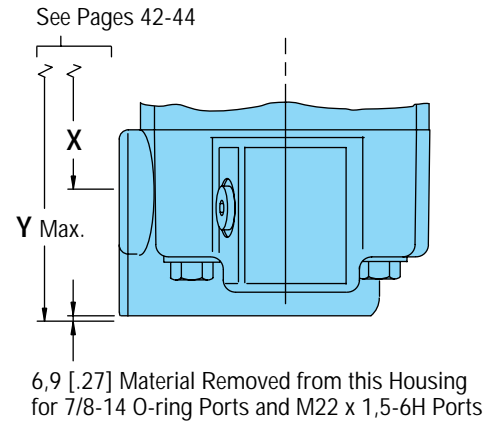
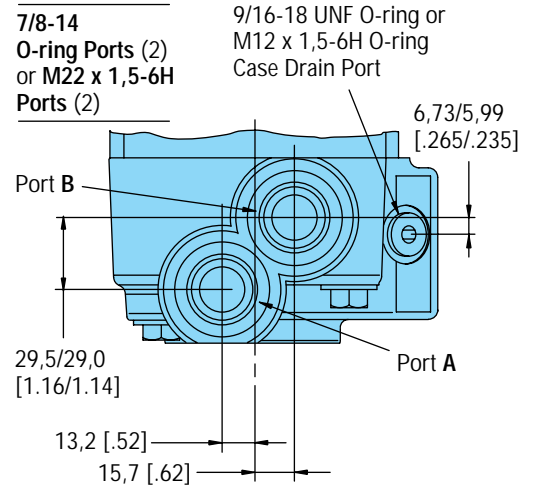
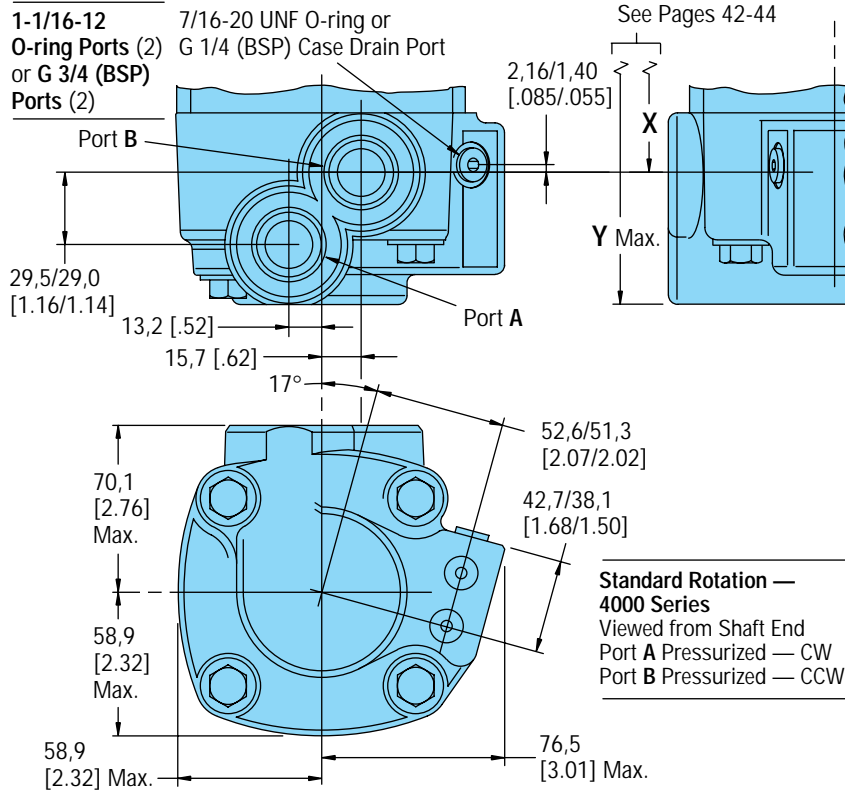


Standard Motor  
Splined  
Shaft



# Dimensions — Ports 4000 Series

## 4000 Series with Shuttle Valve

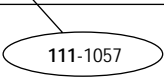


# Product Numbers 4000 Series

## Product Numbers—4000 Series Motors

Use digit prefix —**109-**, **110-**, or **111-** plus four digit number from charts for complete product number—Example **111-1057**.  
**Orders will not be accepted without three digit prefix.**

Mounting	Shaft	Ports	Displ. cm <sup>3</sup> /r [ in <sup>3</sup> /r] Product Number								
			110 [ 6.7]	130 [ 7.9]	160 [ 9.9]	205 [12.5]	245 [15.0]	310 [19.0]	395 [24.0]	495 [30.0]	625 [38.0]
Standard SAE B-Mount	1-1/4 inch Straight	1-1/16 O-ring	109-1100	-1101	-1102	-1103	-1104	-1105	-1106	-1212	-1215
		3/4 inch Split Flange	109-1001	-1054	-1002	-1003	-1055	-1056	-1057	—	—
	1-5/8 Inch Tapered	1-1/16 O-ring	109-1107	-1108	-1109	-1110	-1111	-1112	-1113	—	—
		3/4 inch Split Flange	109-1006	-1058	-1007	-1008	-1059	-1402	-1061	—	—
	1-1/4 Inch 14 T Splined	1-1/16 O-ring	109-1114	-1115	-1116	-1117	-1118	-1119	-1120	—	—
		3/4 inch Split Flange	109-1011	-1062	-1012	-1013	-1063	-1064	-1065	—	—
Standard SAE C-Mount	40 mm Straight	G 3/4 (BSP)	109-1184	-1185	-1227	-1224	-1225	-1189	-1190	—	—
	1-1/2 Inch 17 T Splined	G 3/4 (BSP)	109-1191	-1192	-1193	-1194	-1195	-1196	-1197	—	—
	1-1/4 inch Straight	1-1/16 O-ring	110-1074	-1075	-1076	-1077	-1078	-1079	-1080	—	-1122
		3/4 inch Split Flange	110-1001	-1040	-1002	-1003	-1041	-1042	-1043	—	—
Wheel Motor	40 mm Straight	G 3/4 (BSP)	110-1108	-1109	-1110	-1111	-1112	-1113	-1125	—	—
	1-5/8 Inch Tapered	1-1/16 O-ring	110-1081	-1082	-1083	-1084	-1085	-1086	-1087	1116	-1117
		3/4 inch Split Flange	110-1006	-1044	-1007	-1008	-1045	-1046	-1047	—	—
	1-1/4 Inch 14 T Splined	1-1/16 O-ring	110-1088	-1089	-1090	-1091	-1092	-1093	-1094	—	—
		3/4 inch Split Flange	110-1011	-1048	-1012	-1013	-1049	-1050	-1051	—	—
	Bearingless		1-1/16 O-ring	111-1033	-1034	-1035	-1036	-1037	-1038	-1039	-1062
		3/4 inch Split Flange	111-1044	-1015	-1045	-1046	-1016	-1017	-1018	—	—
		G 3/4 (BSP)	111-1052	-1053	-1054	-1055	-1056	-1057	-1058	—	—



For 4000 Series Motors with a configuration *Not Shown* in the charts above: Use model code number system on page 50 to specify product in detail.

## Model Code for 4000 Series Motors

The following 14-digit coding system has been developed to identify all of the configuration options for the 4000 Series Motor. Use this model code to specify a motor with the desired features. All 14-digits of the code must be present when ordering. You may want to photocopy the matrix below to ensure that each number is entered in the correct box.

### Model Code — 4000 Series Disc Valve Motors

1	2	3	4	5	6	7	8	9	10	11	12	13	14
M	0	4										0	0

**Position 1 Product Series**

**M** ..... Motor

**Position 2, 3 4000 Series**

**04** ..... 4000 Series

**Position 4, 5 Displacement cm<sup>3</sup>/r [in<sup>3</sup>/r]**

**07** ..... 110 [ 6.7]

**08** ..... 130 [ 7.9]

**10** ..... 160 [ 9.9]

**12** ..... 205 [12.5]

**15** ..... 245 [15.0]

**17** ..... 280 [17.1]\*

**19** ..... 310 [19.0]

**24** ..... 395 [24.0]

**30** ..... 495 [30.0]

**38** ..... 625 [38.0]

\* For performance and dimension data contact your Eaton Hydraulics representative.

**Position 6 Mounting Flange**

**A** ..... 4 Bolt (Bearingless 127,0 [5.00] Pilot Dia. and 14,27 [.562] Dia. Mounting Holes 161,9 [6.38] Dia. B.C.

**B** ..... 4 Bolt (SAE B) (Standard) 101,6 [4.00] Pilot Dia. and 14,7 [.58] Mounting Slots on 127,0 [5.00] Dia. B.C.

**C** ..... 4 Bolt (Wheel) 139,7 [5.50] Pilot Dia. and 14,3 [.56] Dia. Mounting Holes on 165,1 [6.50] Dia. B.C.

**F** ..... 4 Bolt (SAE C) (Standard) 127,0 [5.00] Pilot Dia. and 14,3 [.56] Dia. Mounting Holes on 161,9 [6.38] Dia. B.C.

**Position 7, 8 Output Shaft**

**00** ..... Bearingless

**01** ..... 1-1/4 inch Dia. Straight with Straight Key, 3/8-16 Threaded Hole and 53,1 [2.09] Max. Coupling Length

**02** ..... 1-5/8 inch Dia. Tapered with Straight Key and 1-1/4 - 18 UNEF Slotted Hex. Nut

**03** ..... 1-1/4 inch Dia. Splined 14T with 38,1 [1.50] Min. Full Spline Length and 53,1 [2.09] Max. Coupling Length

**13** ..... 1-1/2 inch Dia. Splined 17T with 31,2 [1.23] Min. Full Spline Length

**14** ..... 40 mm Dia. Straight with Straight Key, M12 x 1,75 - 6H Threaded Hole

**Position 9 Port Type**

**B** ..... 1-1/16 - 12 O-ring with 7/16-20 O-ring Case Drain and Check Valve

**C** ..... G 3/4 (BSP) O-ring with G 1/4 (BSP) O-ring Case Drain and Check Valve

**D** ..... 3/4 inch 4 Bolt Split Flange with 7/16-20 O-ring Case Drain and Check Valve

**A** ..... 7/8-14 O-ring with 9/16-18 O-ring Case Drain with Hot Oil Shuttle Valve

**H** ..... M22 x 1,5-6H (ISO) O-ring with M12 x 1,5-6H O-ring Case Drain with Hot Oil Shuttle Valve

**Position 10, 11 Special Features (Hardware)**

**00** ..... None

**01** ..... Viton Shaft Seal

**07** ..... Viton Seals

**13** ..... Seal Guard

**17** ..... Speed Sensor (Std.)

**Position 12 Paint/Special Packaging**

**0** ..... No Paint

**A** ..... Painted Low Gloss Black

**C** ..... Corrosion Protected

**Position 13 Eaton Assigned Code when Applicable**

**0** ..... Assigned Code

**Position 14 Eaton Assigned Design Code**

**0** ..... Assigned Design Code

## Fluid Recommendations

### Char-Lynn Disc Valve Motors

#### Introduction

The ability of Eaton hydraulic components to provide the desired performance and life expectancy depends largely on the fluid used. The purpose of this section is to provide readers with the knowledge required to select the appropriate fluids for use in systems that employ Eaton hydraulic components.

One of the most important characteristics to consider when choosing a fluid to be used in a hydraulic system is viscosity. Viscosity choice is always a compromise; the fluid must be thin enough to flow easily but thick enough to seal and maintain a lubricating film between bearing and sealing surfaces. See chart below for viscosity requirements.

#### Viscosity and Temperature

Fluid temperature affects viscosity. In general, as the fluid warms it gets thinner and its viscosity decreases. The opposite is true when fluid cools. When choosing a fluid, it is important to consider the start-up and operating temperatures of the hydraulic system. Generally, the fluid is thick when the hydraulic system is started. With movement, the fluid warms to a point where a cooling system begins to operate. From then on, the fluid is maintained at the temperature for which the hydraulic system was designed. In actual applications this sequence varies; hydraulic systems are used in many environments from very cold to very hot. Cooling systems also vary from very elaborate to very simple, so ambient temperature may affect operating temperature. Equipment manufacturers who use Eaton hydraulic components in their products should anticipate temperature in their designs and make the appropriate fluid recommendations to their customers.

#### Cleanliness

Cleanliness of the fluid in a hydraulic system is extremely important. Eaton recommends that the fluid used in its hydraulic components be maintained at ISO Cleanliness Code 18/13 per SAE J1165. This code allows a maximum of 2500 particles per milliliter greater than 5  $\mu\text{m}$  and a maximum of 80 particles per milliliter greater than 15  $\mu\text{m}$ . Cleanliness requirements for specific products are given in the table below. OEM's and distributors who use Eaton hydraulic components in their products should provide for these requirements in their designs. A reputable filter supplier can supply filter information.

Char-Lynn Disc Valve Motors	Viscosity		ISO Cleanliness Requirements
	Minimum	Best Range	
	70 SUS 13 cSt	100-200 SUS 20-43 cSt	18/13

#### Additional Notes:

- Fluids too thick to flow in cold weather start-ups will cause pump cavitation and possible damage. **Motor cavitation is not a problem during cold start-ups (with one exception — two speed motors).**
- Minimum / Maximum operating temperatures are -29° C / 82° C [-20° F / 180° F].
- When choosing a hydraulic fluid, all the components in the system must be considered and the best viscosity range adjusted accordingly. For example, when a medium duty piston pump is combined with a Geroler motor the best viscosity range becomes

#### Fluid Maintenance

Maintaining correct fluid viscosity and cleanliness level is essential for all hydraulic systems. Since Eaton hydraulic components are used in a wide variety of applications it is impossible for Eaton to publish a fluid maintenance schedule that would cover every situation. Field testing and monitoring are the only ways to get accurate measurements of system cleanliness. OEM's and distributors who use Eaton hydraulic components should test and establish fluid maintenance schedules for their products. These maintenance schedules should be designed to meet the viscosity and cleanliness requirements laid out in this document.

#### Fluid Selection

Premium grade petroleum based hydraulic fluids will provide the best performance in Eaton hydraulic components. These fluids typically contain additives that are beneficial to hydraulic systems. **Eaton recommends fluids that contain anti-wear agents, rust inhibitors, anti-foaming agents, and oxidation inhibitors.** Premium grade petroleum based hydraulic fluids carry an ISO VG rating.

SAE grade crankcase oils may be used in systems that employ Eaton hydraulic components, but it should be noted that these oils may not contain all of the recommended additives. This means using crankcase oils may increase fluid maintenance requirements.

Hydraulic fluids that contain V.I. (viscosity index) improvers, sometimes called multi-viscosity oils, may be used in systems that employ Eaton hydraulic components. These V.I. improved fluids are known to "shear-down" with use. This means that their actual viscosity drops below the rated value. Fluid maintenance must be increased if V.I. improved fluids are used. Automotive automatic transmission fluids contain V.I. improvers.

Synthetic fluids may be used in Eaton hydraulic components. A reputable fluid supplier can provide information on synthetic fluids. Review applications that require the use of synthetic fluids with your Eaton representative.

100 - 150 SUS [20 - 32 cSt] and viscosity should never fall below 70 SUS [13 cSt].

- If the natural color of the fluid has become black it is possible that an overheating problem exists.
- If the fluid becomes milky a water contamination problem may exist.
- Take fluid level reading when the system is cold.
- Contact your Eaton representative if you have specific questions about the fluid requirements of Eaton hydraulic components.



## Motor Application Information — Vehicle Drive Calculations

### Step One — Calculate Motor Speed (RPM)

$$\text{RPM} = \frac{2.65 \times \text{KPH} \times G}{R_m} \quad \text{RPM} = \frac{168 \times \text{MPH} \times G}{R_1}$$

where KPH = vehicle speed (kilometers per hour)  
 where MPH = vehicle speed (miles per hour)  
 R<sub>m</sub> = rolling radius of tires (meter)  
 R<sub>1</sub> = rolling radius of tires (inch)  
 G = gear reduction ratio (if any) between motors and wheels. If no gear box or other gear reduction devices are used G = 1.

If vehicle speed is expressed in m/second, multiply by 3.6 to convert to KPH.

If vehicle speed is expressed in ft./second, divide by 1.47 to convert to MPH.

### Step Two — Determine Rolling Resistance

Rolling resistance (RR) is the force required to propel a vehicle over a particular surface. The values in Table 1 are typical of various surfaces per 1000 lb. of vehicle weight.

$$\text{RR} = \text{GVW} \times \rho \text{ (kg) (lb)}$$

where GVW = gross (loaded) vehicle weight lb/Kg  
 ρ = value from Table 1

**Table 1 - Rolling Resistance Coefficients for Rubber Tires on Various Surfaces**

Surface	ρ
Concrete, excellent	.010
Concrete, good	.015
Concrete, poor	.020
Asphalt, good	.012
Asphalt, fair	.017
Asphalt, poor	.022
Macadam, good	.015
Macadam, fair	.022
Macadam, poor	.037
Snow, 2 inch	.025
Snow, 4 inch	.037
Dirt, smooth	.025
Dirt, sandy	.040
Mud	.037 to .150
Sand, Gravel	.060 to .150
Sand, loose	.160 to .300

### Step Three — Tractive Effort to Ascend Grade

The largest grade a vehicle can ascend is called its "gradability." Grade is usually expressed as a percent rather than in degrees. A rise of one meter in ten meters or one foot rise in ten feet of travel is a 1/10 or 10 percent grade.

$$\text{GR} = \text{GVW} (\sin \theta + \rho \cos \theta)$$

**Table 2**

Comparison Grade (%)	Table Slope (Degrees)
1%	0°35'
2%	1° 9'
5%	2°51'
6%	3°26'
8%	4°35'
10%	5°43'
12%	6°5'
15%	8°31'
20%	11°19'
25%	14° 3'
32%	18°
60%	31°

### Step Four — Determine Acceleration Force (FA)

The force (FA) required to accelerate from stop to maximum speed (KPH) or (MPH) in time (t) seconds can be obtained from the following equation:

### Step Five — Determine Drawbar Pull

Drawbar Pull (DP) is total force available at the drawbar or "hitch" after the above forces have been subtracted from the total propelling force produced by the hydraulic motors. This value is established as either:

$$\text{FA} = \frac{\text{KPH} \times \text{GVW} \text{ (kg)}}{3.6 \text{ t}}$$

FA = Acceleration Force (Newton)  
 t = Time (Seconds)

$$\text{FA} = \frac{\text{MPH} \times \text{GVW} \text{ (lb)}}{22 \text{ t}}$$

FA = Acceleration Force (lb)  
 t = Time (Seconds)

1. A goal or objective of the designer.
2. A force required to pull a trailer (Repeat steps two through four above using trailer weight and add the three forces together to obtain DP).

**Step Six — Total Tractive Effort**

The tractive effort (TE) is the total force required to propel the vehicle and is the sum of the forces determined in Steps 2 through 5.

$$TE = RR + GR + FA + DP \text{ (Kg. or lb.)}$$

————— Drawbar pull desired  
————— Force required to accelerate  
————— Force required to climb a grade  
————— Force required to overcome rolling resistance

Wind resistance forces can usually be neglected. However, it may be wise to add 10% to the above total to allow for starting resistances caused by friction in bearings and other mechanical components.

**Step Seven — Calculate Hydraulic Motor Torque (T)**

$$T = \frac{TE \times R_m}{N \times G \times E_g} \text{ (Nm / Motors)}$$

$$T = \frac{TE \times R_l}{N \times G \times E_g} \text{ (lb-in / Motors)}$$

where N = number of driving motors  
 Eg = gear box mechanical efficiency

**Step Eight—Wheel Slip**

If the torque required to slip the wheel (TS) is less than the torque calculated in Step 7, the performance objectives cannot be achieved.

$$TS = \frac{W \times f \times R_m}{G \times E_g} \text{ (Nm / Motor)}$$

$$TS = \frac{W \times f \times R_l}{G \times E_g} \text{ (lb-in / Motor)}$$

Where: f = coefficient of friction  
 W = loaded vehicle weight over drive wheel

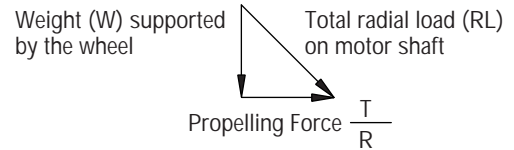
**Coefficient of friction (f)**

Steel on steel	0.15 to 0.20
Rubber tire on dirt	0.5 to 0.7
Rubber tire on asphalt	0.8 to 1.0
Rubber tire on concrete	0.8 to 1.0
Rubber tire on grass	0.4

It may be desirable to allow the wheel to slip to prevent hydraulic system overheating when excessive loads are imposed should the vehicle stall. In this case TS should be just slightly larger than T.

**Step Nine — Motor Radial Load Carrying Capacity**

When a motor is used to drive a vehicle with the wheel mounted directly on the motor shaft or rotating hub, the Total Radial Load (RL) acting on the motor shaft is the vector summation of two forces acting at right angles to each other.



$$RL = \sqrt{W^2 + \left(\frac{T}{R}\right)^2}$$

Refer to radial load rating of each motor (see table of catalog contents page 10 for page listing of the Shaft Side Load Capacity for each motor series).

**Shaft Torque**

$$\frac{T}{2\pi} = \frac{q\Delta P}{62.8} \text{ Nm} = \frac{\text{PSI} \times \text{in}^3/\text{rev}}{6.28} = \text{lb-in}$$

**Shaft Speed**

$$\text{RPM} = \frac{\text{Flow}}{\text{Displacement}} = \frac{1000 \times \text{l/min}}{\text{cm}^3/\text{rev}} \text{ RPM} = \frac{231 \times \text{GPM}}{\text{in}^3/\text{rev}}$$

**Power (into motor)**

$$\text{Kw} = \frac{\text{bar} \times \text{l/min}}{600} \text{ HP} = \frac{\text{PSI} \times \text{GPM}}{1714}$$

**Power (out of motor)**

$$\text{Kw} = \frac{\text{Nm} \times \text{RPM}}{9549} \text{ HP} = \frac{\text{lb-in} \times \text{RPM}}{63,025}$$

- where: Kw = Kilowatt  
 HP = Horsepower  
 LPM = Liters per Minute  
 GPM = Gallons per Minute  
 Nm = Newton Meters  
 lb-in = Pound inch  
 Bar = 10 Newtons per Square Centimeter  
 PSI = Pounds per Square Inch  
 q = Displacement



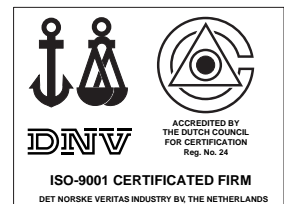
Eaton Corporation is a global manufacturer of highly engineered products that serve industrial, vehicle, construction, commercial, aerospace and semiconductor markets. Principal products include hydraulic products and fluid connectors, electrical power distribution and control equipment, truck drivetrain systems, engine components, ion implanters and a wide variety of controls. Headquartered in Cleveland, Ohio, the company has 63,000 employees and 195 manufacturing sites in 23 countries around the world. Eaton's sales for 1999 were \$8.4 billion.

Information contained in this catalog is accurate as of the publication date and is subject to change without notice. Performance values are typical values. Customers are responsible for selecting products for their applications using normal engineering methods.

### Eaton Hydraulics

14615 Lone Oak Road  
Eden Prairie, MN 55344  
Telephone: 952 937-7254  
Fax: 952 937-7130  
[www.eatonhydraulics.com](http://www.eatonhydraulics.com)

46 New Lane, Havant  
Hampshire PO9 2NB  
England  
Telephone: (44) 23 92-486-451  
Fax: (44) 23 92-487-110



**Quality System Certified**  
Products in this catalog are  
manufactured in an  
ISO-9001-certified site.